

F O U N D A T I O N

2 0 1 3 • 2 0 1 4

Y E A R I N R E V I E W



S A N T A A N A C O L L E G E

Y E A R I N R E V I E W

C O N T E N T S

MUSIC TO OUR EARS

4

LOCAL EFFORTS MAKE THE
NATIONAL SPOTLIGHT

6

CHRISTIAN RABADAN IS
SANTA ANA COLLEGE

8

THE ART OF A LEGACY

10

CELEBRATING A CENTURY OF
STUDENT SUCCESS & FAMILY
TRADITION

12

GREATEST GENERATION
CONTINUES TO CHANGE THE
LIVES OF FUTURE SANTA ANA
COLLEGE STUDENTS

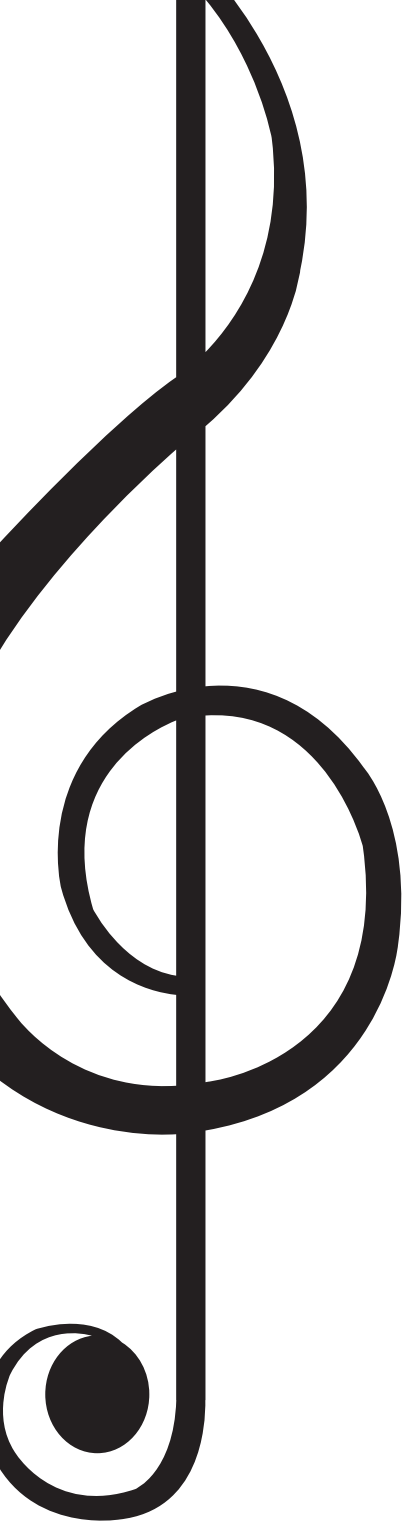
14

FINANCIAL OVERVIEW
CALENDAR

16

DONOR ROSTER

18



IMUSIC
TOOUR
EARS

As we prepare to celebrate Santa Ana College's 100th birthday, we can say with confidence that fundraising never sounded so good.

You—our donors, friends, and partners—represent the core of our mission: to put a college degree in every home in Santa Ana. And it's through your generous giving that our hard-working students are able to transform college-bound dreams into reality. We thank you and are humbled for letting us be the stewards of your philanthropic gifts.

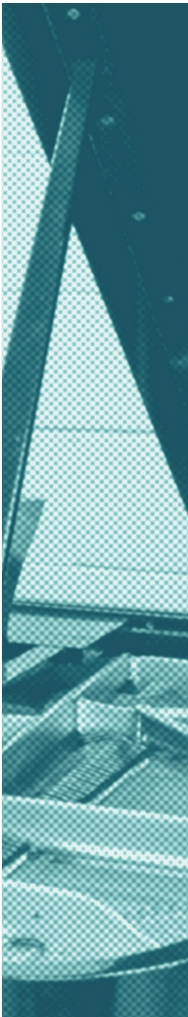
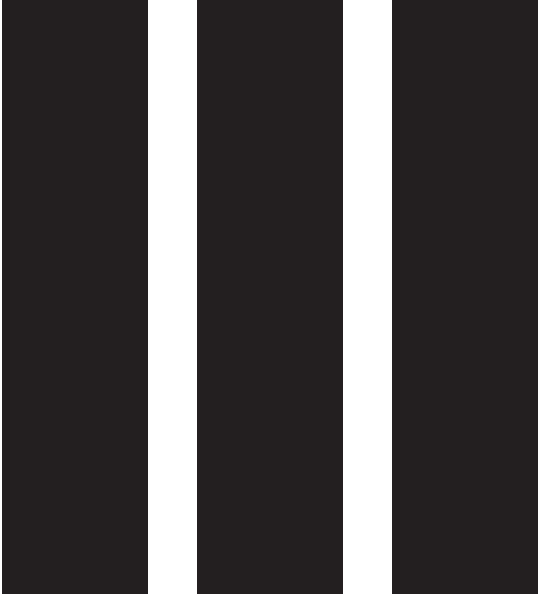
Perhaps the sweetest sounding achievement this year was reaching our "88 Key" fundraising goal to purchase Santa Ana College a Steinway concert grand piano in time for the school's centennial celebration. A joint venture between the Santa Ana College Music Department and the Santa Ana College Foundation, the "88 Key" fundraising campaign launched in April 2013 at a performance featuring concert pianist and renowned Santa Ana College faculty member Jungwon Jin. The initiative included benefit concerts and the opportunity to purchase a key from a piano keyboard; hence, the reference to 88 keys, in order to raise the funding needed for the Steinway piano. The piano of choice at high-profile performing venues, Santa Ana College students will now be able to perform on a Steinway concert grand piano in Phillips Hall, in time for the centennial. For music lovers, faculty, and donors alike, the campaign is music to their ears because it demonstrates Santa

Ana College’s commitment to academic excellence for music students, giving them the same opportunity for success afforded by other local colleges and universities. It also affords the community access to high caliber performances in their own backyard.

This past year, the Santa Ana College Foundation achieved several other remarkable milestones. For example, our Centennial Scholarship program launched a silent campaign phase in 2011 and has now reached a milestone of 108 new scholarship awards of the “100 for 100” goal. Also, the Santa Ana Partnership drew attention from a prestigious national foundation, the Lumina Foundation, which awarded Santa Ana as one of the first 20 cities in the nation with a community grant to increase college degrees throughout the city over the next three years.

With our fundraising efforts moving in a new direction thanks to our college departments, like the Music Department, the Santa Ana College Foundation is positioning itself more as a university foundation in order to accommodate the growth of fundraising.

As we prepare for the next 100 years, we thank you alumni, friends, and patrons. You represent the relationships that strengthen and make our programs, students, and fundraising efforts successful today and for the next 100 years. Thank you for supporting our diligent students and world-class faculty. We look forward to embarking on new fundraising efforts with you. Thank you for taking the time to read our story. Sit back, enjoy, and we hope you’ll agree that fundraising, indeed, has never sounded so good at Santa Ana College.





LOCAL EFFORTS MAKE THE NATIONAL SPOTLIGHT

RARELY DOES A LOCAL COMMUNITY GAIN NATIONAL RECOGNITION FOR ITS EDUCATION EFFORTS. This past December, however, Santa Ana was named by the prestigious Lumina Foundation as one of the first 20 cities in America to take part in the national foundation's Community Partnership for Attainment Initiative.

The grant awards Santa Ana \$200,000 over a three-year period as part of the foundation's Goal 2025 program, a national mobilization effort to increase the proportion of Americans with college degrees, certificates, or other credentials to 60% by the year 2025. The distinction, according to supporters, is a well-deserved vote of confidence for the city.

“For more than three decades, the community of Santa Ana has been on the forefront of making education its top priority,” says Santa Ana College Vice President of Student Services, Sara Lundquist, Ph.D. Lundquist is referring to the Santa Ana Partnership, a 30 year-old collaboration of more than 25 organizations that include parents, students, educators, community leaders, and philanthropists, including Santa Ana College to improve educational achievement, college going, and college completion. “It was the reputation and success of this partnership’s programs that got Lumina’s attention.”

The Santa Ana Partnership, anchored at Santa Ana College, will serve as the backbone organization that will lead this new initiative. Other partners include Santa Ana Unified School District; California State University, Fullerton (CSUF); University of California, Irvine (UCI), and the City of Santa Ana.

Local leaders believe that the grant couldn’t come at a better time. As Santa Ana College prepares to celebrate its 100th birthday in 2015, the grant further highlights local commitment to achieving a college degree in every home in Santa Ana, a goal that the partnership, college, and the Santa Ana College Foundation share.

According to Santa Ana College President Erlinda J. Martinez, Ed.D.,

“THIS GRANT VALIDATES THE EFFORTS OF THE COLLEGE AND THE COMMUNITY AND HELPS US REALIZE OUR VISION FOR HIGHER EDUCATION ATTAINMENT IN SANTA ANA.”

THE LUMINA GRANT WILL AFFORD SANTA ANA:

- College entrance and completion support for veterans and adults
- College completion plans for all incoming and continuing SAC students
- Involvement of SAUSD students and parents with plans that lead to college
- Expanded transfer and retention support at CSUF and UCI
- City-wide establishment of a one-stop higher education center in the Santa Ana Main Library which was launched May 2014.

“It’s our hope that Lumina’s support can fan the flames that are already burning in our partnership cities, improving the results there and showing cities across the country how this gets done and just how transformational education can be for communities’ social, economic, and civic strength,” shares Haley Glover, strategy director at Lumina Foundation heading up the initiative.

Currently, there are over 38,000 households in Santa Ana that have at least one higher education degree, while nearly an additional 35,000 have none. To reach the program’s goal of one college degree in every home by 2025, approximately 3,000 additional higher education credentials need to be earned each year by Santa Ana residents in the next 11 years. Research also shows a direct correlation between thriving cities and education beyond high school whether in the form of undergraduate degrees, certificates, and other credentials. Two-thirds of jobs being created in the nation today require some form of post-secondary credential.

“THE TIMING OF THIS PARTNERSHIP COULDN’T BE BETTER,” shares Lundquist. “With SAC’s centennial around the corner, we are poised to reach for new student success heights as we help every member of our community achieve their academic and professional dreams.”



I S S A N T A A N A C O L L E G E

Growing up in Orange County, he played in his high school's marching band. He was co-captain of the men's volleyball team. He was also an honor student and member of the Future Scientists and Engineers of America. One would assume that he lived on a cul-de-sac, mom carpooled, and that dad worked in a high-rise building. Nothing could be further from the truth.

THE SON OF IMMIGRANT parents, Christian Rabadan has lived in Santa Ana his whole life. Many of the kids he went to elementary school with have been in trouble with the law, some, today, paying their debt to society. His living conditions, in the apartment building he has grown up in, are less than desirable. Yet, he is driven. It's why he strives academically, pursues college, and a career.

His love for science was sparked during a science class at Godinez Fundamental High School. "That's where I began to take an interest in science," recalls the 21-year-old bilingual college student. As a member of his school's Future Scientists and Engineers of America, a local engineering firm helped students test the accuracy and precision of a team-built prototype catapult. "That's when I fell in love with the idea of seeing practical application of physics theory." There was just one obstacle—could college really be for him? And if so, how was he going to get there?

From that point forward, Christian was determined to go to college. As a high school senior, he applied to private and public colleges across the country and locally. He held off applying to UCs because application costs were prohibitive. Although he'd been accepted to several colleges, there was one obstacle in the way: finances. "I always knew that college would be a struggle for me—financially and academically. But I also knew that my family could not better their lives if I didn't provide some sort of support," reflects the Santa Ana resident. "That's why I continually push myself through my academic endeavors." So he made the decision to begin his college-bound future at Santa Ana College.

While at Santa Ana College, his studies and work consumed his time. He took advantage of the numerous clubs and opportunities that Santa Ana College offers. For instance, since high school and while at Santa Ana College, he volunteered at Think Together, a regional on-site, after-school academic program. Most recently he worked as a substitute program leader. This past summer, he traded a summer job for summer research with Santa Ana College professors. One project had Santa Ana College students partnering with Chapman University students to work with NASA- and JPL-affiliated professors analyzing soil moisture to assist Southern California fire fighters. His second research project was through Santa Ana College's psychology department in collaboration with UCI and CSUF for a rigorous six-week research program. Another Santa Ana College program that Christian benefited from was U-LINK (University Link). There, he volunteered his time with a monthly food drive and health check-up in the community. He also honed his leadership skills as an officer in Santa Ana College's Engineering Club and Associated Student Government and was a member of the school's Civil Engineering Club.

Christian's achievements did not go unrecognized while at Santa Ana College. He received the Terry Lee Coleman Memorial Scholarship which is given to deserving and highly-motivated Santa Ana College students. As he recalls, however, it was the people and relationships that he's thankful for. "They were my advocates. Through e-mails, phone calls, and words of encouragement, my counselors from iAdelante!, U-LINK, and M.E.S.A. (Math, Engineering, and Science Achievement) helped me navigate the college application and transfer process," he recalls. When he applied to four-year colleges, he was accepted to UCI, UC Riverside, UC Davis (wait listed), and three Cal States: Fullerton, Long Beach, and San Francisco. Through Santa Ana College's U-LINK program, a transfer program that offers Santa Ana College students guaranteed admission to UC Irvine, Christian was able to secure a spot at UCI this fall where he'll continue his undergrad work as a full-time junior computer sciences and engineering major. And he's already been recognized for his achievements at his new university: he received the Chancellor's Scholarship which is awarded to students who demonstrate a high level of academic achievement, leadership positions, campus or community activities, work experience, and financial need. To make ends meet while at UCI, he's considering a work study program, and he'll be looking into the possibility of minoring in chemistry. He'd like to explore the idea of becoming a medical doctor. "I want to see if I can do this. I'd like to be a pediatrician," he says.

Perhaps, the most unexpected, yet memorable, gesture for Christian was when life happened. Focusing his college transfer applications on only public schools now—Cal States and UCs—Christian knew that fees would add up, so he diligently saved his money from his job at Staples. Then it happened; his car tire blew out. The cost: everything he'd saved for college application fees. "I mentioned it to my iAdelante! counselor," he recalls. In turn, his counselor spoke with Santa Ana College Foundation's Executive Director. Christian was awarded a Santa Ana College Foundation President's Circle Urgent Action Award which helped pay for his college application fees. A mishap turned into an opportunity which has now opened doors. And all because people are listening and giving.

The spark for college may have ignited in a high school classroom and brightened during a school club project, and his living conditions may motivate him to work hard, but as the computer science and engineering major acknowledges, it was the opportunities and carefully weaved relationships at Santa Ana College and the Santa Ana College Foundation that kindled his aspirations, and served to make the bridge to college a reality.



THE ART OF A LEGACY

Art lover, community college advocate, World War II veteran, and Santa Ana College alum Thomas Frederic “Fred” Humiston’s legacy contribution to Santa Ana College will soon be part of the college’s permanent art collection.



When Thomas passed in 2011 at 101 years of age, a portion of his bequest, \$50,000, went toward an art piece for the college's permanent art collection. The installation of a timeless metal sculpture, named "Infinite Spirit," coincides with the renovation of the college mall in late spring of 2016. Southern California artist James Russell is honored that his piece was chosen by the college. "All of my pieces always point upwards because they're uplifting," observes Russell. The six-foot highly polished stainless steel sculpture is made up of two pieces working as one, according to the artist. One piece is straight, while the other curves around it, embracing it. The sculpture, according to Russell, symbolizes the endless, unlimited potential that students have.

Tony Sparks, trustee of the Thomas Humiston Trust and Thomas' nephew, visited the college campus that his uncle so fondly remembered in April 2013 in order to present the Santa Ana College Foundation Board of Directors with a symbolic check. "This sculpture represents and preserves my uncle's love of the arts and is also a way to continue the education of art at his alma mater and the community," points out Sparks.

A former community college administrator with a brief appointment to the U.S. Army during WWII, Thomas went on to earn his Ph.D. in education from Stanford after beginning his college career at Santa Ana College. After retirement, he and his wife Nancy of 50 years traveled the world. His love of community college continued as he enrolled in classes at his local college. In 1997, the Santa Ana High School graduate established the Genevieve Humiston Memorial Scholarship in memory of his sister, a former instructor and counselor at Santa Ana College. The scholarship is awarded annually to a full-time continuing student majoring in business.

The former Santa Ana resident's legacy contribution to the Santa Ana College Foundation also includes \$250,000 toward the Santa Ana College Centennial Scholarship Campaign, a three-year "100 for 100" fundraising drive matching gifts of \$25,000 and above. Because of this benefit, Thomas' endowed scholarship will impact twice as many students making it possible for 20 additional students to receive \$1,000 annually.

— C E L E B R A T I N G A

C E N T

O F S T U D E N T

S U C C E S S

&

T R A D I T I O N F A M I L Y



T U R Y

ON APRIL 17, 2014, the Santa Ana College Foundation marked the kickoff of its Centennial Anniversary by launching its Centennial Celebration at a private reception. The reception celebrated the Centennial Blue Ribbon and Planning Committee members, the leaders that will help create and drive Santa Ana College into this tremendous milestone. We also honored the inaugural Centennial Scholarship Campaign donors that have pledged their commitment to our students in the form of new scholarship awards. The three-year "100 for 100" campaign builds a new scholarship endowment increasing overall support for scholarships at Santa Ana College.

Based on the vision of the Santa Ana College Foundation Board of Directors and Santa Ana College's President, Erlinda J. Martinez, Ed.D., the campaign was established to mark the school's 2015 centennial milestone while helping to launch students' futures for the next 100 years. With 108 new scholarships already pledged as of press time, the campaign has surpassed its first goal of 100 scholarships. Continued generosity of community partners and donors has the Foundation working toward the next 100 scholarships.

Twenty-two inaugural Centennial Scholarship donors were recognized at the kickoff reception for their support. For one couple, being named inaugural donors was also the beginning of a family tradition. "We wanted to honor my parents, Allan and Sandy Fainbarg," shares Nancy Chase. "Santa Ana College has a special place in their hearts." Nancy Chase and her husband, Irv, established a \$25,000 Centennial Scholarship in her parents' names. The scholarship recognizes students who volunteer and give back to the community, and might also be in financial need. Before graduating from USC, Allan Fainbarg attended Santa Ana High School and Santa Ana College. Nancy acknowledges that her parents recognize that education is the best way to success. "This is one way, in their name, to help students who otherwise aren't able to go to school."

The SANTA ANA COLLEGE FOUNDATION would like to give a special thank you to all inaugural Centennial Scholarship donors:

ED & DIXIE ARNOLD
TOM & MILLIE BEEGHLY
NANCY & IRVINE CHASE
JOSE CORONA
GLORIA DAVENPORT TRUST
ALLAN & SANDY FAINBARG
STEVEN FAINBARG
DENNIS FARRELL
NORM & SUE FUJIMOTO
BRUCE & LISA GELKER
THOMAS F. HUMISTON TRUST
FRIENDS & FAMILY OF CHARLES LUNDQUIST
ERLINDA J. MARTINEZ, ED.D.
ESTATE OF JANE J. MCCARTY
LISA MCKOWAN-BOURGUIGNON
PEPSI
FRIENDS & FAMILY OF JAMES PROFFITT
KEN & BARBARA PURCELL
RAÚL RODRIGUEZ, PH.D.
IN MEMORY OF JOSETTE ROMERO
RSCCD FOUNDATION
SANTA ANA NORTH ROTARY CLUB
KALONJI SATERFIELD
FRIENDS & FAMILY OF WES SCHAFFNER
SCHOOLSFIRST FEDERAL CREDIT UNION
SIMS-ORANGE WELDING/NEAL & LISA BROWN



REREATEST GENERATION

CONTINUES TO CHANGE THE LIVES OF FUTURE SANTA ANA COLLEGE STUDENTS

The retired school teacher never set out to establish a scholarship in her own name. Her job as a volunteer on a college scholarship committee was to simply read applications and essays from hopeful recipients. Over time, however, students from one particular community college tugged at her heart strings, and her volunteer post would soon inspire her to legacy plan.

Part of the Greatest Generation—Americans who came of age during the Great Depression and fought during World War II—Jane McCarty symbolized this generation well. A former U.S. Navy Lieutenant, retired teacher, wife, and mother, Jane McCarty's planned gift to the Santa Ana College Foundation today is leaving her legacy for generations to come.

Born in Illinois and raised in Pomona, California, she attended Pomona Junior College during the Great Depression. To make ends meet, her older sister paid for her college books and tuition. Transferring to UCLA, she graduated with her Bachelor's degree, worked as a secretary, then, during WWII, served as a Lieutenant in the U.S. Navy at Terminal Island in Long Beach. There she met her husband; they married, and shortly after, her real calling as a teacher would begin.



SHE **NEVER ATTENDED SAC.** SHE **WASN'T AN ALUM.** AND SHE **NEVER TAUGHT THERE.** BUT JANE MC CARTY'S AFFINITY FOR ONE SPECIAL GROUP OF COLLEGE STUDENTS WAS ENOUGH TO CEMENT THIS RELATIONSHIP FOR YEARS TO COME.

While working toward her teaching credential, she also worked as a teacher. She would teach at Los Angeles Unified School District for 20 years. Working, going to school, and raising three children, her husband, who worked in the rail industry, fell ill and was unable to work. As a result, she became her husband's caregiver and her family's sole bread winner.

After her husband's death, she retired, moved to Leisure World in Seal Beach, and joined the California Retired Teachers Association (CRTA). Little did she know that a special bond with Santa Ana College students would begin here and lead to a lifetime of hope for many.

During her nearly 15 years of membership at the CRTA, Jane served as an officer and also sat on a scholarship committee that reviewed scholarship applications and essays from various California college students, including students from Santa Ana College. It was here that she was given a glimpse into the hearts of Santa Ana College students through the thank you notes they would write her. "The students would write my mom thank you notes," recalls daughter Connie Sutton. "It was these notes that left an impression on her."

Retirement also included traveling to Europe and China. "Our mom worked hard, saved her money, and lived within her means, so she was able to do all the things she wanted to do," explains Sutton. She also invested in annuities. As she grew in years, Jane shared with her children what her wishes were in terms of her estate. Her fondness for Santa Ana College students cultivated earlier through those thank you notes, and her heart for community college students—she being one herself—prompted her to bequeath an annuity to Santa Ana College upon her death. On August 13, 2013, at the age of 97, Jane McCarty passed away. This past spring, after estate papers were finalized, the

Santa Ana College Foundation received Jane's planned gift of \$25,000 for scholarships gifted in perpetuity for students majoring in library science, teaching, and Spanish. Together, the family chose the majors: teaching for Jane's career, Spanish for Connie's major, and library science because Jane patronized libraries from the time she was a child in Pomona and through her years living in the San Fernando Valley, and the library at Leisure World. Known as the Jane McCarty Memorial Scholarship, each year two students will each be given scholarships in the amount of \$1,000 beginning next spring. As part of Santa Ana College's Centennial Scholarship program, her planned gift of \$25,000 has been matched, bringing the total of the fund to \$50,000. She never attended SAC. She wasn't an alum. And she never taught there. But Jane McCarty's affinity for one special group of college students was enough to cement this relationship for years to come.

"I'm grateful that mom planned ahead," points out Connie. "By letting us kids know ahead of time about her plans was very thoughtful because it made a difficult time—the loss of a parent—less trying, and it's meant a great deal to see her legacy continue."

Consulting a certified financial planner is the best course of action for families considering a planned gift. In addition, institutions that commonly accept legacy gifts, like the Santa Ana College Foundation, have experts on staff to advise and inform individuals and families.

This member of the Greatest Generation survived the Great Depression and WWII, served country, family, community, and classroom with determination and kindness. As Santa Ana College embarks on its centennial celebration, the Santa Ana College Foundation is grateful to, and honored by, Jane McCarty for her forethought and unselfish gift.

T O T A L G I F T S

\$1
M I L

OVER

WAS RAISED AND AWARDED
IN OUR CORPORATE AND
STUDENT SUCCESS GRANT
PROGRAMS.

\$97,500

T O T A L S C H O L A R S H I P S A W A R D E D

OVER \$390,000 TO

O — V — E — R

\$412,000

23
L I O N

\$6.96
MILLION
TOTAL ASSETS

623
STUDENTS

TOTAL PROGRAM
FUNDING

MARK YOUR
CALENDARS

May • 5 • 2015

Ed Arnold Golf Classic

May • 22 • 2015

Annual Scholarship
Awards Ceremony

June • 5 • 2015

Alumni Hall of Fame
Induction Ceremony

September • 2015

President's Circle Event

September • 19 • 2015

Centennial Birthday Party

October • 4 • 2015

Athletic Hall of Fame
Induction Ceremony

December • 2015

Pageant of the Trees

March • 12 • 2016

Centennial Open House

\$250,000-\$999,999

Allan & Sandy Fainbarg +

\$100,000-\$249,999

Lumina Foundation for Education
Orange County Community Foundation

\$50,000-\$99,999

The California Endowment

\$25,000-\$49,999

Irving and Nancy Chase
Edison International
Union Bank Foundation

\$10,000-\$24,999

Crevier Family Fund/Donnie Crevier +
Foundation for California Community Colleges
Norman & Susan Fujimoto
SunLife Financial
The Estate of Gloria M. Davenport, Ph.D.
U.S. Bank
Valencia Jewelry Mfg.
Waltmar Foundation
Wells Fargo +

\$5,000-\$9,999

Bank of the West
Bernards +
Facilities Planning & Program Services, Inc. +
First American Financial Corporation
Governor's Scholarship Programs
HMC Architects +
Kiowa Tribe of Oklahoma
Linda and Tod White Charitable Fund
OCC Foundation
Robert & Cheryl Ooten +
Orange County Fire Chiefs Association
Pioneer Circuits, Inc.
R.A. Industries, LLC
Santa Ana Kiwanis Club Foundation +
Scholarship America
SchoolsFirst Federal Credit Union +
Sims-Orange Welding Supply, Inc.
The Wooden Floor
Erma Jean Tracy +
Westberg + White, Inc. +

\$2,500-\$4,999

Bob Acosta +
Aitken, Aitken & Cohn/Wylie & Bette Aitken
Ed & Dixie Arnold +
California Motor Car Dealers Scholarship Foundation
Citizens Business Bank
Dennis & Charlene Farrell
Friends of the Leisure World Library
Gemini Industries, Inc.
Dennis & Glenda Gilmour *
Kidsingers
Suzanne & John Lohmann *
Dr. Sara Lundquist *+
Martfam Foundation
Dr. Jeffrey McMillan *+
Mike Quevedo Sr. Scholarship Fund
Orange County Bar Foundation, Inc.
Kathleen Patterson *+
Ken Purcell +
Seabee Memorial Scholarship Association
Dr. Lilia Tanakeyowma *+
The Gas Company +
Mark Wiederkehr

\$1,000-\$2,499

Academic Senate
Salvatore Addotta
Angels Baseball
Mary Anne Anthony-Smith *+
Association of Long Beach Ed. Mgrs.
AT&T
Atkinson, Andelson, Loya, Ruud & Romo
P.T. Beeghly +
Ron Beeler
Sherri Blake *
Thomas Bonetati *+
Boulder Valley School District
Cherie Bowers *+
B P O Elks Lodge No 1475
California Grocers Association Educational Foundation
Chris Cannon *
Nancy Cheng
Dr. Michael Collins *+
Cordoba Corporation +
Lou Correa +
Crevier BMW\Mini
Douglass & Melanie Davert +
Diversified Agency Fund
Rolf Engen +
John & Joy Lynn Finch *+
John Fries +
Yolanda Garcia *+

Andrew Gonis *+
R. Edwin Halverson
Hensel Phelps Construction Co.
Ira Hermann
Raymond Hicks *+
Thom & Sheryl Hill
Simon B. Hoffman +
Mark & Mary Huebsch *+
Craig Hunter +
Bonita Nahoum Jaros, Ph.D. *+
Kaiser Permanente
Majid Kashi *
James Kennedy *+
Eve Kikawa +
Edward J. LeBeau
Bong-Soon Lee
Little Eagle Free, Inc.
Elias M. Lopez
Mark Manion +
Lynn & Gerald Marecek *+
David Mares
Erlinda J. Martinez, Ed.D. *+
Diane M McCarry, TTEE
Caren McClure *
Gwen Morgan-Beazell *
Marilou Morris *+
Ignacio & Ruth Muniz +
Jayne Carol Munoz +
NBC Textbooks
Than & Bichlien Nguyen
Joyce Norwood
Joel Ohlgren & Nancy B. Even +
Orange County Asian and Pacific Islander Community Alliance (OCAPICA), Inc.
Orange County Public Affairs Association
Orange Rotary Community Trust Fund
Thomas & Ginger Osborne
Prime Healthcare Anaheim, LLC
Kathleen & John Robe
Julie K. Robertson
Raúl Rodriguez, Ph.D. *
Christina Romero +
Dr. Linda Rose *+
Rotary International District 5320
Luisa Ruiz *
SA High School Dollars for Scholars
Santa Ana Board of Education
Santa Ana North Rotary Foundation
Donna Scarbrough +
Serve the People, Inc.
Catherine Shaffer *
Simon Family Foundation
Smith Public Affairs

James & Debra Sorensen +
Mary Steckler *+
Robert Stein
Constance M. Sutton
SYA Foundation
Teresa's Jewelers +
The Legacy Foundation
The Reeves Law Group
Valinda Tivenan *
Trust of David W. Lacey
Sylvia C. Turner
Dorothy V. Van Tatenhove
Gaddi Vasquez +

\$500-\$999

Advantel Networks
David Alexander
Cathey Bertot
BKF Engineers
Gary D. Blankenhorn
Avie Bridges *
Laurence Brown *
California Strawberry Growers Scholarship Fund
California Retired Teacher Association Div
Chapter AB, PEO
Curtis Childress & Dena Montiel-Childress **
C.N. Tribal Programs
Bob Davis
John Didion
Jason Drew Forgash
Heather K. Gillette
Guaranty Chevrolet
Scott M. Halberstadt
John Hanna *
James R. Harris
Nadine Highsmith
J & J Productions, Inc.
Buck Johns
Brian Kehlenbach *
Kiwanis Club of the Foothills
Hans Juergen Kloepfer
Amalia Lam
Christine Leon *
Lorenzo & Kelly Lopez
Patricia L. Mansfield, Ph.D. *
Mr. & Mrs. Rufino C. Martinez
Lisa McKowan-Bourguignon *
Mark McLoughlin
Teresa Mercado-Cota *
Mr. C's Towing of South Gate, Inc.
Adam O'Connor *
David Ogas
Donald Orr
Gabriela Sanchez *
Santa Ana Police Officers Association
Santiago High School
Kalonji Saterfield
School of Continuing Education

United Agribusiness League
Martha Vargas *
S.M. Vizthum
Terri Wann
Cheryl & Jim West

\$250-\$499

Frank Addleman
Nick M. Ananias
Rosemary Argo
Terry Bales *
Best Best & Krieger LLP
Bookstore Fund/RSCCD
John W. Carlyle
Dons Baseball
Dons Football
Thomas Eastmond *
Catherine Emley *
Donna Fisher
Mike Foulds
Caroline Frye-Reed
Garden Grove High School ASB
Dick Gorrie
Fernando Guillen
Randy Hammon
David N. Hartman
Judith Iannaccone *
John Jurczak
Steve Kawa
Larry McGrew Construction
Jim Lee
Ann Lockhart *
Keith Luhnnow
Romelia Madrigal *
Jane Mathis *
Kenneth May
Caroline McCabe *
Rebecca Miller
Linda Miskovic
Dale Mixer *
Carlos Muniz
Hector Muniz
Loy Nashua *
Carlos Ordiano
Fernando Ortiz *
Brett Pagett
Dana Pagett
Monica Porter *
Fortino Rivera
Joanna Robledo-Campos *
Reymundo Robledo *
Dennis or Lisa Sadler
Maricela Sandoval *
Santiago Canyon College Foundation
Kathleen Simmons *
Cameron M. Smith, Jr.
Marta Sneddon
The Buena Park Noon Lions Club, Inc.

Robert J. Vaught
Joseph C. Viera
Matthew Welch
Ted Yamada

\$1-\$249

John Acuna
Dennis Airey
Susana G. Albuja
Mrs. K.C. Allen
Claudia Alvarez
Mike Anderson
Angeline O. Andrade-Morioka
Mark Angelich
Norimichi & Kayo Arakawa
John Arena
Abel & Sandra Arredondo **
Elizabeth Arteaga
Barbara Atwood
Nena Baldizon-Rios *
Marta Barker *
Everardo & Richard Baro
Maria Baro Quartuccio
Shirley Baynard & Diana Ignatius
Greg Beard
Tom Beckerle
Kyla Benson *
Phyllis A. Blake
David & Marie Breig
California Art Education Association
Paula Canzona *
Carl's Jr. Restaurants, LLC
Norma Castillo
Jim Causky
Albert Chin *
Judyanne Chitlik
Alberta D. Christy
Andy Clark
Donald & B. Ashleigh Cole
Claire Coyne
Randy Davis
Karen Dennis *
Dolly & Leland Dey
David Dobos
Dalva Dwyer *
William Edinger *
Deeann Elder
Dave Elliott
Tony Ellis
Scott P. England
Irma O. Esparza
William Farone & Cynthia O'Donohue
Fred Ferrell
Rick Fochtman
Stephanie Fondren *
Suzanne Freeman
Christine & John Fullerton
Jim & Freda Fullerton

Susan Gaer
Dianna Gallego & William Defer
Jay & Deborah Garbutt
Maria Garibay *
Catherine E. Gaw
Ralph Gibson
Irena Glomba *
Goldstar Events, Inc.
Guillermo Gomez
Christine Gorlato *
Christoph Graham
Darel & Joretta Griffin
George Gumbrecht
Kristen Guzman *
Becky Haglund *
Peter Hardash
Mark Hardtke
Sandra Hendon *
Merlin L. Henry, Jr.
Eddie Hernandez, Jr.
Mark Higgins *
Mike Hill
Vera Holder *
Dean Hopkins
Todd Huck
Phillip Hughes *
Margaret Humphreys *
Durendal Huynh *
Jerald Iverson
Shelly Jaffray *
Louise Janus *
James N. Jeffery
Crystal Jenkins *
Shelley Joe *
Mitch Johns
Geoff Jones
Chris Kaeser
Daniel & Noemi Kanouse
Michael Kelcher *
David E. Kim, MD
Diane Kincheloe
Herminia Kindelan *
Soledad Knipp *
Mary Kobane
Paul M. Kohlhas
Michael Konetzke
Tom Konsoeer
KPMG Foundation
Karri & Terry Krie
Dennis Kuhl
Cherylee Kushida
Alice Kuykendall
L&S Tax Service
Lawrence & Priscilla Labrado
Michael Lewis *
Richard or Janice Liegeois
Nilo Lipiz *
Lance Lockwood *
Patricia Lopez

Leticia Lopez-Jaurequi *
 Maria Luppani *
 Timothy & Nanci Lynch
 Donald Mahany
 James & Shirley Mahoney
 Mary Makena *
 Richard Manzano *
 Marine Corps Musicians Association
 Alice Marquez
 Phil Marquez
 Lori Marquez-Rodriguez
 Art & Shirlee Martinez
 Domingo Martinez
 Elaine Martinez
 Jan Martinez
 Jolee Martinez
 Michael Martinez *
 Alan & Yolanda McConnell
 Donald & Barbara McPherson
 Roan McRae
 Krystal Meier *
 Jennifer Meyers-Gidding *
 Mike's Reasonable Roofing
 Renee Miller
 Albert Molina *
 John Monteleone
 Barbara Moore *
 Thomas Moore
 Ruby Morillos
 Sandra Morris-Pfyl
 Timothy & Jacqueline Morrow
 Ken & Irma Munoz
 Rick Muth
 Elva Negrete *
 Henry Ngo
 Diem Nguyen *
 Jimmy Nguyen
 Madeleine Nguyen *
 Phuong T. Nguyen
 Quynh Nguyen *
 William Nguyen *
 Adam Nyssen *
 Mike Ogas
 Alfonso Oropeza
 Judith H. Othmer
 Warren Owens
 Beatriz Padilla *
 Betty J. Page
 Ed Pagett
 Pat Pagett
 Michelle Parolise *
 Carrie Patton *
 Tuyet Pham *
 Richard Porras
 Sandra & Gary Poteet
 Saul & Ann Marie Quiroz
 Marco Ramirez *
 Gloria Ramos *
 Felix Razo *

Theresa Recinos *
 Linda & James Reed
 Charles Rhashaw *
 Ida Rheinecker
 Lee & Donna Rivard
 Kristen Robinson
 Brandon Rocke
 Jovita Rodriguez
 Luis Rosas
 Kristina Ross
 Susana Salgado *
 Elizabeth Saliba *
 M.B. & D.L. Samuels
 Paul Santangelo
 Sarah Santoyo *
 Gilbert Scarnecchia
 Dave Scott
 Mark Severson
 Gabriel Shweiri
 Kenneth Sill *
 Cheryl Sims
 Spyder Manufacturing, Inc.
 Curt Stanley
 Phyllis Steele *
 Mike Stelmasek
 Marc and Jeannie Stirdivant
 Julie & Bob Stirling
 Jacob & Heather Story
 Mike Suydam
 Dorothy Swayne *
 George Sweeney
 Mike Taylor
 Sheena Tran
 Twin Cities Public Television
 Kennethia Vega *
 Susan & Mark Venaas
 Julia C. Vercelli
 Lisa M. Visco
 Ann Vu, MD Inc.
 Cathy Wagner
 Richard & Janet Walker
 Nancy Warren
 Lawrence & Christine West
 Paul Westberg
 Westminster School District
 Mark Wheeler
 Chris Wild
 Linn Wiley
 Lithia Williams
 Charles Earl Winkler
 Leisa & Terrel Winston
 Alistair Winter *
 Virginia Witmer *
 Lana Wong *
 Alan Hing Ying Woo
 Doug Wooley
 George & Sharon Wright
 Chang-Ching Yang *
 John Zarske *

SPECIAL RECOGNITION TO...

These extraordinary partners who worked with the Santa Ana College Foundation in significant ways to advance our students:

- City of Santa Ana – Sponsor of Santa Ana Futures
- Floral Park Neighborhood Association
- PEO, Chapter AB
- The Orange County Hispanic Education Endowment Fund

T H A N K
Y O U !



* Payroll Donor
+ President's Circle Member

F O U N D A T I O N
2 0 1 3 • 2 0 1 4
Y E A R I N R E V I E W

The Santa Ana College Foundation offers a variety of planned giving options. Whether your estate is simple or complex, there is a tax-advantaged gift planning vehicle that is just right for you. Your support will help SAC's students to succeed and provides a lasting legacy for future generations.

Now more than ever, supporting community colleges contributes to the strength of a community and its citizens. Santa Ana College educates the Orange County community, trains its workforce, and provides access to countless educational and vocational opportunities.

Community colleges, though state supported, often lack the alumni structure and support that four-year colleges and universities enjoy. The Santa Ana College Foundation helps to endow programs and scholarships that enhance our students' chances for success.

Examples of Planned Gifts include, but are not limited to, the following:

- Charitable Remainder Trust (CRT)
- Bequests
- Charitable Gift Annuities (CGA)
- Real Estate Remainder Gifts
- IRA Distribution
- Retirement Funds
- Life Insurance

For more information, please call the Foundation Office at 714-564-6091.

SANTA ANA COLLEGE
FOUNDATION BOARD OF DIRECTORS

Ken Purcell, President
Ed Halverson, Vice President
Tony Ellis, Secretary
Fortino Rivera, Treasurer
Kristin Crellin, Chairman

John Acosta
Eric Alderete
Ed Arnold
R. Lewis Bratcher
Alberta D. Christy
Madeline Grant
Dr. Sara Lundquist
Mark Manion
Dr. Erlinda Martinez
Ignacio A. Muñiz
Jayne Munoz
Jamie Pirritano
Tina Robinson
David Valentin

Christina Romero, Executive Director