

Supporting Undocumented Students: Limited Area Signage Initiative

A simple, effective proposal to support our undocumented student community through clear signage identifying limited area on campus.

These designated areas provide critical protection during ICE raids, as **agents cannot legally enter without a federal judicial warrant.**



Policy inspired by Undocu-scholars' initiative:



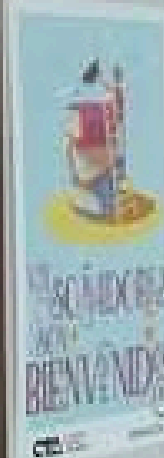
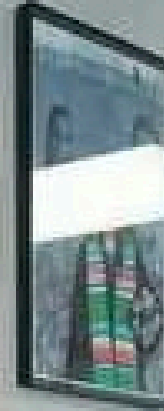
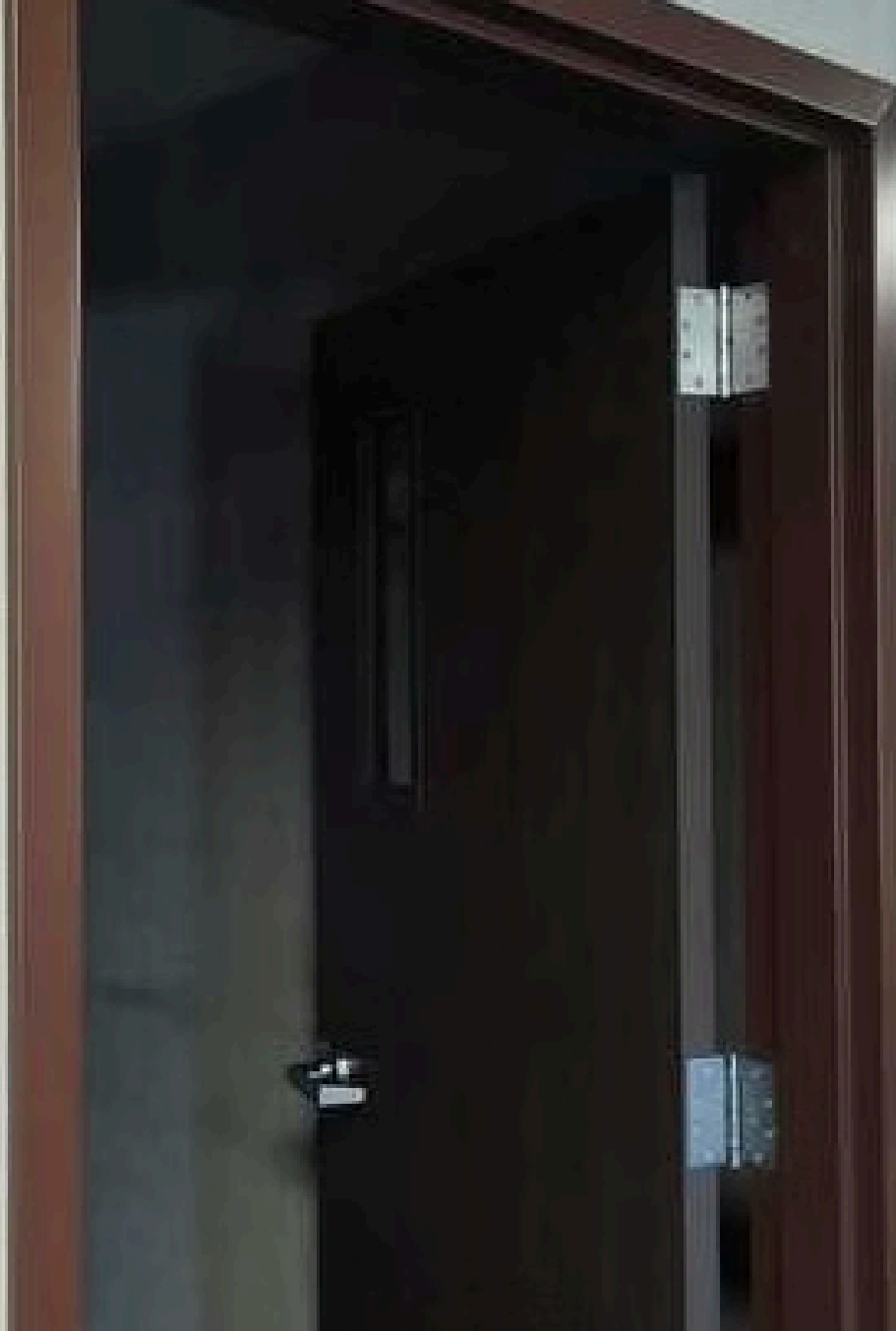
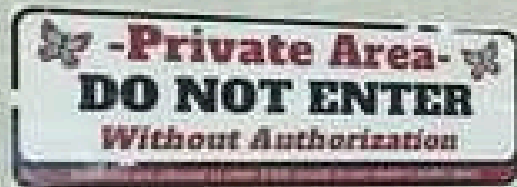
-Private Area-



DO NOT ENTER

Without Authorization

Students are allowed to enter if felt unsafe in our center's public space



New Designs (Dratfs):

-Limited Access Area-



**Santa Ana College inspires, transforms, & empowers
a diverse community of learners.**



-Limited Access Area-



**Santa Ana College inspires, transforms, & empowers
a diverse community of learners.**



-Restricted Area-



**Santa Ana College inspires, transforms, & empowers
a diverse community of learners.**



-Restricted Area-



**Santa Ana College inspires, transforms, & empowers
a diverse community of learners.**



Back of the Signs:

SAC employees are required to contact SAC Campus Safety at (714) 564-6330 if there are immigration enforcement agent(s) asking to gain access to restricted or limited areas.

I.C.E. may not enter restricted, limited access area of the campus without authorization or a valid federal warrant. Federal warrants must be signed by a federal judge or magistrate, must be current and dated, and specify the area that is to be searched. SAC Campus Safety will review the warrant and/or additional relevant documents once notified.

SAC employees are required to contact SAC Campus Safety at (714) 564-6330 if there are immigration enforcement agent(s) asking to gain access to restricted or limited areas.

I.C.E. may not enter restricted, limited access area of the campus without authorization or a valid federal warrant. Federal warrants must be signed by a federal judge or magistrate, must be current and dated, and specify the area that is to be searched. SAC Campus Safety will review the warrant and/or additional relevant documents once notified.

The Core Proposal



Install Clear Signage

Place signs around campus indicating which areas are limited areas.



Create Safer Environments

Provide protected spaces during potential ICE raids.



Offer Symbolic Support

Show our commitment to protecting undocumented students.



Benefits of Implementation

Cost-Effective

The initiative requires minimal financial investment for sign production and installation.

Easy to Implement

Simple signage can be quickly designed, approved, and installed across campus.

Immediate Impact

Provides both practical protection and peace of mind for vulnerable students.

Existing Communication Efforts



February 18th, Mass Email

President's Office sent "*Answering FAQs and Resources: Immigration Enforcement at SAC and SCE Campuses*", which informed students about this important loophole of extra protection related to private vs. public areas.



ASG Flyer Approval and Distribution

Executive and legislative branches approved 300 informational flyers.

[Click here](#)

IMMIGRATION CUSTOMS ENFORCEMENT (ICE) ON CAMPUS?

1

STAY CALM: IMMEDIATE COMPLIANCE IS NOT REQUIRED. SAC HAS TO ESTABLISHED ADMINISTRATIVE PROCEDURES AND POLICIES FOLLOW. MAINTAIN A CALM AND PROFESSIONAL DEMEANOR.

2

DIRECT AGENTS TO SAC CAMPUS SAFETY: INFORM THE OFFICERS THAT YOU ARE NOT OBSTRUCTING THEIR PROCESS, BUT THAT YOU MUST REFER THEM TO THE PROPER CHANNEL FOR GUIDANCE AND ASSISTANCE. **DIRECT THE OFFICER TO CONTACT SAC CAMPUS SAFETY AT THEIR 24/7 LINE: (714)564-6330.**

3

KNOW THAT CAMPUS SAFETY WILL DOCUMENT: SAC CAMPUS SAFETY WILL NOTIFY THE PRESIDENT'S OFFICE AND SHARE DOCUMENTATION OF IMMIGRATION ENFORCEMENT ACTIVITIES THAT OCCUR ON CAMPUS.

FREQUENTLY ASKED QUESTIONS:

- **WHAT ARE MY CIVIL RIGHTS?**

THE RIGHT TO REMAIN SILENT. THE RIGHT TO CONSULT AN ATTORNEY. THE RIGHT TO REFUSE SEARCH WITHOUT A VALID WARRANT. THE RIGHT TO MAKE A PRIVATE PHONE CELL CALL WHEN DETAINED.

- **CAN THE DISTRICT SHARE PERSONAL STUDENT INFORMATION?**

NO. THE DISTRICT IS OBLIGATED TO PROTECT STUDENT PRIVACY UNDER THE FAMILY EDUCATIONAL RIGHTS AND PRIVACY ACT (FERPA).

- **WHAT IS A "PRIVATE" OR "PUBLIC" AREA ON CAMPUS? CAN ICE ENTER A PRIVATE AREA?**

PRIVATE AREAS INCLUDE CLASSES (WHILE IN SESSION), OFFICE SPACES YOU LOCK WHEN YOU LEAVE, KITCHENS WHERE PATRONS ARE NOT ALLOWED, OR BEHIND COUNTERS SUCH AS THE HEALTH CENTER, AND SOME PARTS OF THE NEALLEY LIBRARY. ICE AGENTS CANNOT LEGALLY ENTER A PRIVATE AREA WITHOUT A WARRANT.

- **WILL SAC CAMPUS SAFETY ENFORCE FEDERAL IMMIGRATION LAWS?**

NO. IN ALIGNMENT WITH THE CALIFORNIA VALUES ACT (SB 54), DISTRICT POLICY RESTRICTS THE INVOLVEMENT OF CAMPUS SECURITY IN FEDERAL IMMIGRATION ENFORCEMENT.



SCAN QR CODE
FOR MORE
RESOURCES



SANTA ANA COLLEGE



SANTA ANA COLLEGE

Made with GAMMA

Existing Model: Undocumented Student Center



Current Signage

The Undocumented Student Center at the Village already uses these signs effectively.



Proven Design

These signs can serve as a **draft** for the campus-wide initiative.



Expanding Impact

The proposal aims to replicate this successful model across all campus buildings.

Academic Senate Support Request



Formal Endorsement

Official support from Academic Senate



Collaborative Planning

Work with [all departments](#) and soon the [President's office](#) to implement it



Advocacy

Champion the initiative across campus

Questions?