



# **Santa Ana College**

## **Facilities Meeting**

**September 15, 2015**





SAC Facilities Committee  
September 15, 2015  
1:30p.m. – 3:00p.m.  
SAC Foundation Board Room, S-215

---

***THE FACILITIES COMMITTEE** is the participatory governance committee responsible for identifying and prioritizing capital projects including scheduled maintenance projects. It serves as an information and exchange body on facilities projects that are in construction or that are being planned.*

*Santa Ana College Participatory Governance Structure Handbook (May 8, 2013)*

---

### **Agenda**

1. Welcome and Introductions
2. Public Comments
3. Approval of Minutes – April 28, 2015 ACTION
4. Project Updates- Carri Matsumoto/ Darryl Taylor/ Matt Schoeneman INFORMATION
  - Bond Projects Update
  - SAC Active Project Update
  - Scheduled Maintenance Projects
5. Standing Reports (5mins.) INFORMATION
  - HEPSS Task Force – Don Mahany
  - Facilities Report – Mark Wheeler
  - Environmental Task Force  
<http://curc3r.org/getting-credit/>
6. Old Business
7. New Business INFORMATION
8. Other
  - Next Meeting - Tuesday, October 20, 2015

---

*The mission of Santa Ana College is to be a leader and partner in meeting the intellectual, cultural, technological, workforce and economic development needs of our diverse community. Santa Ana College prepares students for transfer, employment, careers and lifelong intellectual pursuit in a dynamic learning environment.*

---



**SAC FACILITIES MEETING  
MINUTES –APRIL 28, 2015  
1:30P.M. – 3:00P.M.**

Draft for Approval

The mission of Santa Ana College is to be a leader and partner in meeting the intellectual, cultural, technological and workforce development needs of our diverse community. Santa Ana College provides access and equity in a dynamic learning environment that prepares students for transfer, careers and lifelong intellectual pursuits in a global community.

Administrators		Academic Senate		CSEA	
Michael Collins, Co-chair	Rhonda Langston	Maria Aguilar Beltran	Susan Sherod	Mike Ediss(a)	vacant
Sherry DeRosa	Christine Leon	Elliott Jones, Co-chair	Valinda Tivenan(a)	Sarah Salas	Maria Taylor(a)
Bart Hoffman(a)	Omar Torres(a)	Dietrich Kanzler(a)	John Zarske(a)	District Liaison	
Nilo Lipiz(a)	Mark Wheeler	George Moore(a)		Carri Matsumoto	
Eve Kikawa(a)				Darryl Taylor	
Guests				Campus Safety & Security	
Tom Bonetati	Kathy Takahashi			Mike Colver	
Rhonda Langston	Matt Schoeneman			ASG Representative	
				Minhchau Chau	
1. WELCOME AND INTRODUCTIONS					
		Self Introductions were made.		Meeting called to order – 1:32p.m. Adjourned at 2:51p.m.	
2. PUBLIC COMMENTS					
		There were no public comments			
3. MINUTES		DISCUSSION/COMMENTS		ACTIONS/ FOLLOW UPS	
		The March 17, 2015 meeting minutes were presented for approval.		ACTION Motion was moved by M. Wheeler to approve the March 17, 2015 Facilities committee minutes as presented. 2 <sup>nd</sup> – M. Aguilar Beltran The motion carried unanimously.	
4. PROJECT UPDATES		DISCUSSION/COMMENTS		ACTIONS/ FOLLOW UPS	
		Carri Matsumoto provided the membership with an overview of the Measure Q projects as well as Active Projects (see attached). Additional comments as noted.  Chavez Hall Renovation Ground samplings are being taken to compare soils from the time the building was built to now. Important to assess the soil. This will be important in order to better understand of the condition of the soil as well what is going on with the exterior skin. It was noted that this is one of the			

PROJECT UPDATES (cont.)	DISCUSSION/COMMENTS	ACTIONS/ FOLLOW UPS
	<p>first approaches of investigation. It one of the sources of information for the team.</p> <p>Ms. Matsumoto clarified the responsibility of a geological engineer.</p> <p><b>Johnson Student Center</b>  The Over-The-Counter DSA approval process will hopefully trim the anticipated for getting the project approved.</p> <ul style="list-style-type: none"> <li>• The construction work needed to prepare the Village for the Johnson Center occupants is anticipated to be a quit tenant improvement configuration.</li> <li>• It was clarified that there is not going to be a RELOCATION of any programs. Specifically, there is a classroom that is being used for the Auto Diesel program that will need to be relocated.</li> </ul> <p><b>Dunlap Hall</b>  Members were reminded that construction will be completed by the end of September followed by the roof replacement. Re-occupancy is targeted for January 2016.</p> <ul style="list-style-type: none"> <li>• Classrooms and lecture halls are being painted.</li> <li>• Work continues on the light gauge metal framing.</li> <li>• Preparing to install the metal paneling system on the exterior.</li> </ul> <p>A Project Process was provided for the Johnson and the STEM building projects.</p> <ul style="list-style-type: none"> <li>• The campus will be provided a few iterations of alternate designs for each building to provide options for the campus.</li> <li>• There aren't many changes after the Design Development Phase.</li> <li>• Program confirmation is an important phase as it allows to move forward into design.</li> </ul> <p><b>STEM/Health Sciences Building</b>  The membership was provided with some background on the building plans. Health Sciences is a state approved project. An FPP for the building was approved.</p> <ul style="list-style-type: none"> <li>• The college is held to the exact square footage for the building by the state based on the approved FPP. <ul style="list-style-type: none"> <li>◦ Only the layout can be adjusted. No adjustments to the programming areas can be done.</li> </ul> </li> <li>• The Health Sciences building is the Russell Hall replacement in unison with the STEM building project.</li> <li>• Members were reminded that the campus would be responsible for a 50% match.</li> <li>• The STEM building project will proceed with local funds.</li> <li>• Health Sciences building will be delayed until another funding source is identified. <ul style="list-style-type: none"> <li>◦ A state facilities bond is uncertain at this time.</li> </ul> </li> </ul>	

PROJECT UPDATES (cont.)	DISCUSSION/COMMENTS	ACTIONS/ FOLLOW UPS
	<ul style="list-style-type: none"> <li>• Russell will continue to house programs that are slated for Health Sciences.</li> <li>• Health Science building is being programmed as a classroom type environment to help replace Russell Hall as Russell comes down.</li> <li>• Stem building mainly science labs.</li> <li>• Being programmed now with input from faculty/Dept. Chairs and Deans.</li> </ul> <p>Members were reminded that the Health Sciences building will continued to be programmed with STEM but will not move forward due to lack of state funding at this time.</p> <p><b>Central Plant and Infrastructure</b></p> <ul style="list-style-type: none"> <li>• Waiting for the last submittal to come through.</li> <li>• Working on some problematic areas. Once resolved the schedule will be reset.</li> <li>• Budget will be reconciled before the design phase.</li> <li>• Will go out to bid in June.</li> <li>• Looking to award bid in September.</li> <li>• Targeting to start construction in October.</li> <li>• Pre-Construction company, McCarthy is working on a new sequencing plan of work. <ul style="list-style-type: none"> <li>○ The plan is to have all buildings operational during construction.</li> <li>○ McCarthy working on a plan to have temporary HVAC and generators for each buildings if needed.</li> <li>○ Phillips Hall and C building need additional structural upgrades to house the mechanical equipment. <ul style="list-style-type: none"> <li>▪ These buildings may be moved to a four week block in the summer as the buildings need to be completed with the least amount of occupants. That possibility is being validated with more information to come.</li> </ul> </li> </ul> </li> </ul> <p><b>Building H Painting, Louvers Removal and Screen Replacement</b></p> <p>This project will be broken up and re-packaged. Parts of project will be moved to the summer and window replacement at another time.</p> <p><b>Dunlap Hall Roof Repairs</b></p> <p>In the middle of assigning an architect.</p> <p><b>Door Hardware Upgrade</b></p> <ul style="list-style-type: none"> <li>• Currently the schedule is being developed. The schedule will be Dunlap (prior to the re-occupancy), Phillips Hall, E bldg., C bldg., and A.</li> <li>• Cores and hardware is on hand and pinning process is underway.</li> <li>• Consultant will coordinate changeover efforts.</li> <li>• User meetings will occur to ensure that all faculty and staff have the keys they need.</li> </ul>	

PROJECT UPDATES (cont.)	DISCUSSION/COMMENTS	ACTIONS/ FOLLOW UPS
	<b>Building J, R, T Plumbing Fixtures</b> <ul style="list-style-type: none"> <li>Members were reminded that Russell Hall will remain operational for a period of time but will eventually go offline.</li> <li>Important that the plumbing fixtures are operational, efficient and serve the needs of students and faculty without triggering other upgrades.</li> <li>Water efficiency and conservation is critical to the college.</li> </ul> <p>It was noted that currently the City of Santa Ana does not have a reclaimed water program.</p>	
<b>5. Standing Reports</b>	<b>DISCUSSION/COMMENTS</b>	<b>ACTIONS/ FOLLOW UPS</b>
<b>HEPSS (Health, Emergency Preparedness, Safety and Security) Task Force</b>	The task force meets every other month. There was no meeting this month. No report.	
<b>Facilities Report</b>	The SAC Facilities Report was presented by Mark Wheeler (see attached). Appreciation was shared on behalf of CEC for the recent work. Members were reminded that the department continues to work hard at CEC to do their best with limited staffing.	
<b>Environmental Task Force</b>	<p>Ms. Sherod highlighted the following:</p> <p>She is currently putting through curriculum from the Engineering Dept. related to Renewables, Green HVAC and Building Automated System controls. This curriculum is in line with the Better Building Workforce guidelines.</p> <p>Currently students are investigating grey water use.</p> <ul style="list-style-type: none"> <li>Storing grey water isn't a good way to go due to hygiene and expense.</li> <li>Best system is to reclaim new water such as sink, shower and drinking fountain water.</li> <li>Grey water use is legal as long as it is used on plants.</li> <li>Simplest and most cost effective – Use and lose it.</li> </ul>	
<b>6. Old Business</b>	<b>DISCUSSION/COMMENTS</b>	<b>ACTIONS/ FOLLOW UPS</b>
	<b>Hand washing signs in student restrooms</b> <p>Ron Jones provided a sampling of signs that are currently in a few of the restrooms on campus. These signs will be placed in the remainder of the restrooms on campus.</p> <p>There was an inquiry regarding a possible need of conservation signs. Discussion ensued.</p> <p>It was noted that aerators with flow restrictions may be an option to consider.</p> <ul style="list-style-type: none"> <li>The district has established water baselines for the various sites within the district.</li> <li>Able to identify how much water was used as well as the cost of that water. <ul style="list-style-type: none"> <li>Last years' construction used a lot of water.</li> </ul> </li> <li>We do have meters that track water usage but not specifically for each building. <ul style="list-style-type: none"> <li>The Central Plant will allow for detailed tracking.</li> </ul> </li> </ul>	

Old Business (cont.)	DISCUSSION/COMMENTS	ACTIONS/ FOLLOW UPS
	<ul style="list-style-type: none"> <li>• The M&amp;O grounds continue to move forward in their conservation efforts.</li> <li>• Still more needs to be done to meet 25% mandated water reduction.</li> <li>• The benefits of utilizing grey and reclaimed water was noted.</li> </ul> <p>Members were reminded that the installation of new plumbing fixtures could potentially trigger additional DSA mandates which could have a substantial budgetary impact. However, it was noted that the college continues to move forward in its water conservation efforts.</p> <p><b>Lot 1 Improvements</b>  <u>Re-striping of parking stalls</u></p> <ul style="list-style-type: none"> <li>• The east end of Lot #1 will be restriped as well as new signage.</li> <li>• The first 22 stalls on the right will be reserved for staff.</li> <li>• The remainder of the lot will be open to students after 4:00p.m.</li> </ul> <p>These measures will help to alleviate faculty parking concerns.</p> <p><b><u>Speed bumps</u></b>  It was noted that Security has assessed the speeding issue in lot #1 and has recommended installing two speed bumps in the front roadway building between W &amp; G pedestrian walkways to slow traffic in the lot. That work is in progress.</p>	
7. New Business	DISCUSSION/COMMENTS	ACTIONS/ FOLLOW UPS
	<p><b>Electric Car Charging Stations</b>  The committee was advised that some changes will occur to the car charging stations to help alleviate some of current issues in an effort to better meet the college's needs.</p> <ul style="list-style-type: none"> <li>• Currently one of the car charging stations is a handicapped stall. That stall will be moved over while still maintaining compliance.</li> <li>• Both stalls will be marked and signed for electrical cars only.</li> <li>• Work will be completed in concert with the work in lot #1.</li> <li>• The signage will state a 4 hour maximum. It was noted that the time limit is a change from the original time limit of 2 hours.</li> </ul> <p>The membership was reminded that changes may occur as we continue to define the campus needs and this committee will review and discuss any changes.</p> <p><b>Stem Building programming</b>  Dr. Jones noted that he had intended to address some faculty concerns, however his concerns were addressed in Ms. Matsumoto's earlier presentation.</p> <p>Members were reminded of the process for programming.</p> <ul style="list-style-type: none"> <li>• Currently options are being developed to the draft program based on recent input received from faculty/Dept. Chairs.</li> <li>• The options will then go back to the Dept. Chairs for review.</li> <li>• The importance for the group to reconfirm and revalidate the goals and</li> </ul>	

New Business (cont.)	DISCUSSION/COMMENTS	ACTIONS/ FOLLOW UPS
	<p>priorities was noted.</p> <ul style="list-style-type: none"> <li>• The goal is to have programming confirmation by the end of May. <ul style="list-style-type: none"> <li>◦ If there continue to be concerns, further discussions will occur.</li> </ul> </li> </ul> <p>Members were reminded that every time you make adjustments in cost or square footage it affects projects down the road.</p> <p>It was noted that the process is working exactly as it was set up to.</p>	
8. Other	DISCUSSION/COMMENTS	ACTIONS/ FOLLOW UPS
	<p><u>Request for an additional student stall in Lot #6</u></p> <p>There was a request for an additional student stall in Lot #6. After discussion it was determined that with the upcoming construction an entire lane of parking stalls will be lost. In addition, lot#6 is scheduled to be re-designed with the STEM building project.</p> <p><u>May 19 SAC Facilities Meeting</u></p> <p>Due to the conflict with the Awards for Excellence Ceremony the meeting will be canceled. It was noted that Dr. Collins will send out a campus wide communication after the May revise updating the campus on the budget and the facilities.</p>	

SUBMITTED BY Geni Lusk 5/27/2015





**SANTA ANA COLLEGE  
FACILITIES COMMITTEE MEETING  
SEPTEMBER 15, 2015**





## ACTIVE PROJECTS

### **Santa Ana College**

- ▶ Dunlap Hall Renovation
- ▶ Chavez Hall Renovation
- ▶ Temporary Village Phase 2

## Santa Ana College

- ▶ Perimeter Site Improvements
- ▶ Building G Renovation
- ▶ Artesia Street Improvements
- ▶ Property Acquisition of 17<sup>th</sup>/Bristol St. Lot
- ▶ Central Plant (Design)
- ▶ Dunlap Hall Renovation (Design)
- ▶ Temporary Village
- ▶ Parking Lot 11 & Site Improvements
- ▶ Tessmann Planetarium & Restroom Addition



# PROJECT UPDATE SANTA ANA COLLEGE CHAVEZ HALL RENOVATION

## Project Summary:

- ▶ Repairs to the roof, exterior walls, windows, parapet and restoration of interior and exterior finishes.

## Current Status:

- ▶ Geotechnical investigation underway.
- ▶ Test pilot project underway.
- ▶ Multi-phase project due to significant budget shortfall.

## Budget:

- ▶ \$400,000 (under review).





## PROJECT UPDATE SANTA ANA COLLEGE TEMPORARY VILLAGE PHASE 2

### Project Summary:

- ▶ Relocation of current Johnson programs into The Village including reconfiguration.
- ▶ Relocation of Quick Copy Center from Building J.

### Current Status:

- ▶ Currently in construction documents phase.
- ▶ Target construction February 2016 – April 2016.
- ▶ Target move into Temporary Village – spring 2016.

### Budget:

- ▶ \$3 million





## PROJECTS

- ▶ Dunlap Hall Renovation
- ▶ Central Plant & Infrastructure
- ▶ Johnson Student Center
- ▶ Johnson & Building J Demolition
- ▶ Science Center
- ▶ 17<sup>th</sup> & Bristol Street Parking Lot





# PROJECT UPDATE SANTA ANA COLLEGE DUNLAP HALL RENOVATION

## Project Summary:

- ▶ Renovate and replace the aging guard rails around the pedestrian walkways on all levels of Dunlap Hall, as well as, providing a new elevator tower and stairway.
- ▶ Remodel the existing restrooms.

## Current Status:

- ▶ Current activities include installation of elevator guardrails, painting of exterior building and apply traffic coating on all decks around existing building and new addition.
- ▶ The roof will be replaced following the renovation of work and completed under another contract for work.
- ▶ Bid for roof replacement was released August 5, 2015 and bids were due September 2, 2015. Anticipated Board approval September 28, 2015.
- ▶ Target re-occupancy January 2016 for Spring Semester 2016.



## Budget:

- ▶ \$17.22 million



**SANTA ANA**  
**COLLEGE**



# PROJECT UPDATE SANTA ANA COLLEGE CENTRAL PLANT AND INFRASTRUCTURE

## Project Summary:

- ▶ Construction of a new central plant building, a new electrical building, utility replacement, and mechanical upgrades to 7 buildings. Site improvements include an underground chilled water piping loop, new gas, electrical, domestic water lines, sewer, drainage and fire water systems. A new fountain and trellis along with hardscape and low watering landscaping.
- ▶ Includes HVAC system conversion for 7 existing buildings to be connected to the new central cooling plant, including a new campus wide energy management system (EMS).
- ▶ The central plant building will be designed to meet LEED Silver certification.

## Budget:

- ▶ \$68.17 million



## Current Status:

- ▶ All plan submittals have been approved by DSA – Architect is working with DSA to consolidate applications into three DSA numbers.
- ▶ Contractor award pending approval by Board of Trustees (Anticipated Sept. 28, 2015).
- ▶ RFPs in progress for material testing, hazmat and Inspector of Record.
- ▶ Target construction: Oct. 2015 – Dec. 2017.
- ▶ Project Close-Out 2018





# PROJECT UPDATE SANTA ANA COLLEGE CENTRAL PLANT AND INFRASTRUCTURE

## Fountain/Trellis/Centennial Circle





# PROJECT UPDATE SANTA ANA COLLEGE JOHNSON STUDENT CENTER

## Project Summary:

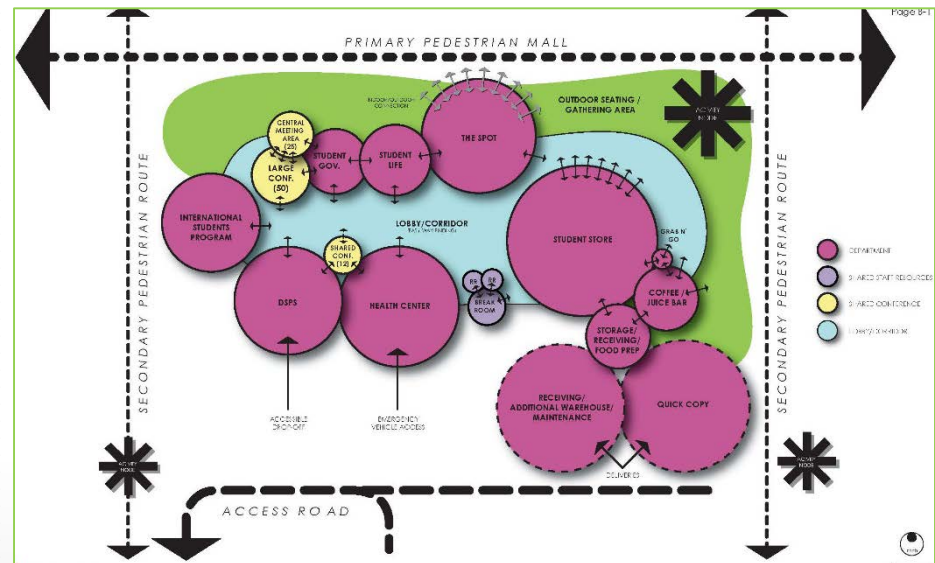
- ▶ Demolition of entire Johnson Student Center and replacement with a new Johnson Student Center.

## Current Status:

- ▶ Project is on hold pending recommendation and target budget reconciliation.
- ▶ Draft program document completed.
- ▶ DSA approval TBD.
- ▶ Target new construction start TBD.

## Budget:

- ▶ \$28.50 million (under review).





# PROJECT UPDATE SANTA ANA COLLEGE JOHNSON & BUILDING J DEMOLITION

## Project Summary:

- ▶ Demolition of existing Johnson Student Center.
- ▶ Demolition of existing Building J.
- ▶ Relocation of Quick Copy Center and Maintenance Storage is part of Temporary Village Phase 2 Project (see Measure E).

## Current Status:

- ▶ Project is currently in planning phase.
- ▶ Target relocation into interim housing- spring 2016.
- ▶ Decommission building in spring/summer 2016.
- ▶ Target demolition start in summer 2016 – winter 2016

## Budget:

- ▶ \$1.8 million (under review).







# PROJECT UPDATE SANTA ANA COLLEGE SCIENCE CENTER

## Project Summary:

- ▶ Construction of a new 65,428 square foot science center housing modern laboratories, classrooms, lecture classrooms, and faculty offices.

## Current Status:

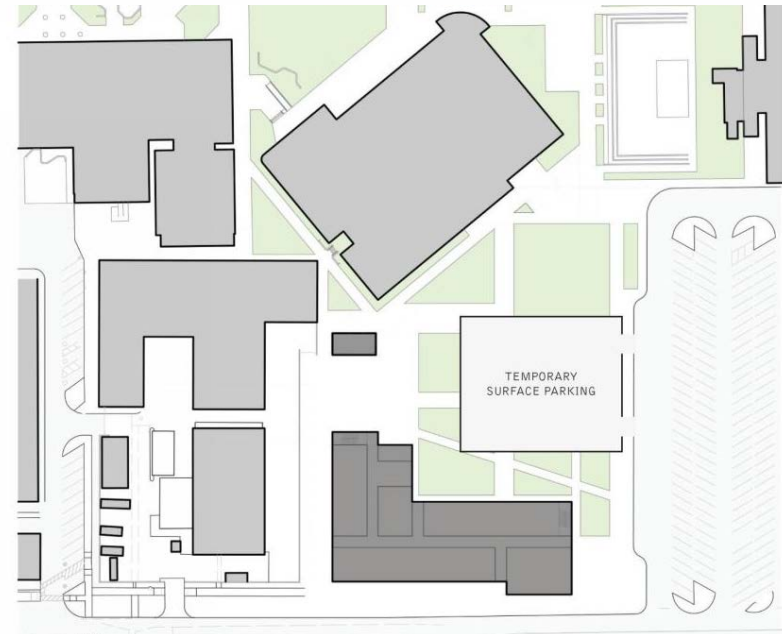
- ▶ Programming phase completed.
- ▶ HGA Architects is in the schematic design phase and continuing meetings with user groups.
- ▶ DSA approval target – August 2017
- ▶ Target construction start – February 2018

## Budget:

- ▶ \$73.38 million



SCHEME 1





# PROJECT UPDATE SANTA ANA COLLEGE PARKING LOT AT 17<sup>TH</sup>/BRISTOL ST.

## Project Summary:

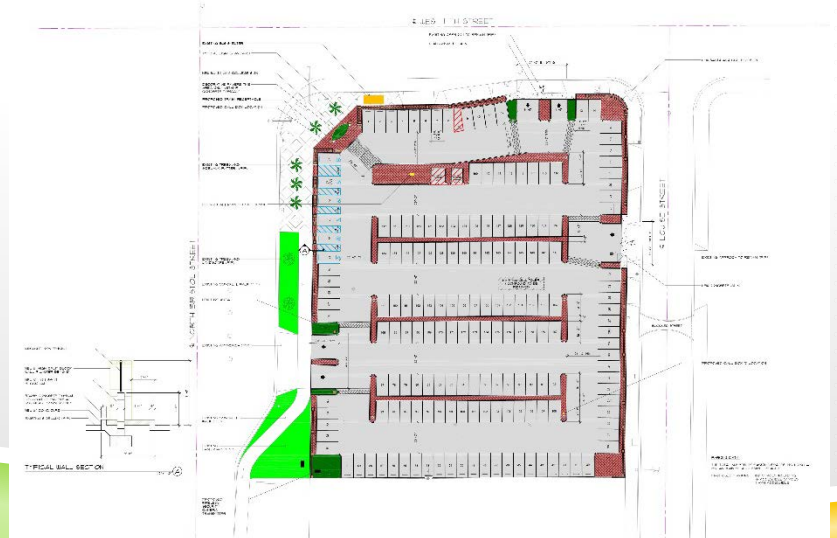
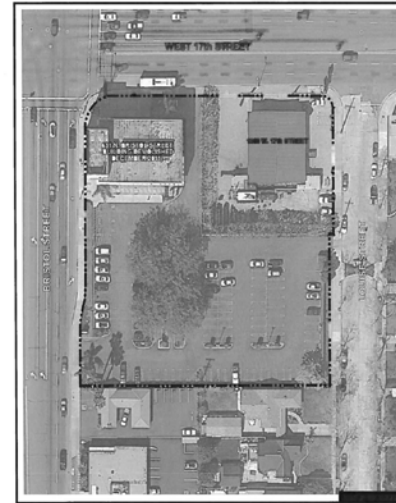
- ▶ New surface parking lot.

## Current Status:

- ▶ The project is in construction document design phase.
- ▶ Parking lot to be utilized for contractor worker parking for Dunlap Hall renovation and Central Plant on an interim basis.
- ▶ Target DSA submittal fall 2015 (under review due to City reviews that may be needed).
- ▶ Target construction spring 2016.

## Budget:

- ▶ \$2.5 million
- ▶ Acquisition of property was paid by Measure E funds.





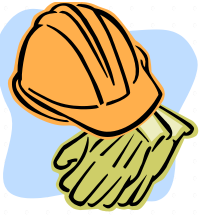
# 2015-2016 SCHEDULED MAINTENANCE PROJECTS

## **Santa Ana College**

State Allocation 2016

\$1,837,665

- ▶ Roof Replace/Repair Buildings E, G, K, S, T, W
- ▶ Campus Water Conservation Projects
- ▶ Door Replacement Buildings C, H, L, R, S and OCSRTA
- ▶ Gymnasium Wood Floor Repair
- ▶ Exterior Painting Buildings C & S
- ▶ Waste Oil Tank Replacement Building K



# 2014-2015 SCHEDULED MAINTENANCE PROJECTS

## **Building E, L, T & R Exterior Painting**

### Project Summary:

- ▶ Re-painting of exterior surfaces of the buildings, including anti-graffiti coating for exposed CMU posts and brick locations.

### Current Status:

- ▶ All buildings have been completed.
- ▶ Minor punch-list items ongoing.
- ▶ Anticipated Notice of Completion September 28, 2015.

### Budget:

- ▶ \$287,800

## **Dunlap Hall Roof Repairs**

### Project Summary:

- ▶ Repairs to roof at Dunlap Hall.

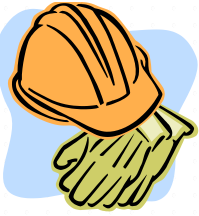
### Current Status:

- ▶ Bids August 5, 2015 and bids were due September 2, 2015.
- ▶ Mandatory job walk held Thursday, August 27, 2015.
- ▶ Anticipated board approval September 28, 2015.

### Budget:

- ▶ \$455,500

Note: All Scheduled Maintenance and Capital Facilities Projects are under review due to State deadlines for spending down the State Allocation 2015. Santa Ana College's State Allocation for 2015 is \$1,872,322.



# 2014-2015 SCHEDULED MAINTENANCE PROJECTS

## Chavez Hall Roof Repairs

### Project Summary:

- ▶ Roof repairs to Chavez Hall.

### Current Status:

- ▶ Minor punch list items ongoing.
- ▶ Notice of Completion anticipated for September 28, 2015.

### Budget:

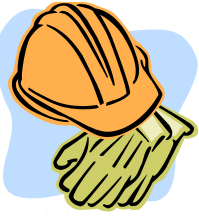
- ▶ \$208,000



Note: All Scheduled Maintenance and Capital Facilities Projects are under review due to State deadlines for spending down the State Allocation 2015. Santa Ana College's State Allocation for 2015 is \$1,872,322.







## OTHER PROJECTS

### **Santa Ana College**

- ▶ Door Hardware Upgrade
- ▶ CEC Parking Lot Slurry and Re-striping
- ▶ Orange County Sheriff's Regional Training Academy Perimeter Wall





## OTHER PROJECTS

### **Door Hardware Upgrade**

#### Project Summary:

- ▶ To retrofit door hardware across the campus.
- ▶ This work will be phased over the next several years.

#### Current Status:

- ▶ Work is ongoing.

#### Budget:

- ▶ \$184,318

### **CEC Parking Lot Slurry and Re-Stripe**

#### Project Summary:

- ▶ Repairs to parking lot, restoration and re-striping.

#### Current Status:

- ▶ Striping of parking stalls will occur Saturday, September 26th.
- ▶ Slurry application will occur end of September.
- ▶ Anticipated completion by end of September 2015.

#### Budget:

- ▶ \$204,977



## OTHER PROJECTS

### **Orange County Sheriff's Regional Training Academy**

#### Project Summary:

- ▶ New block wall to screen training area from the public right-of-way.
- ▶ Temporary screening as an interim measure.

#### Current Status:

- ▶ Project is in design.
- ▶ Anticipated DSA submittal October 2015.
- ▶ Anticipated construction March 2016.

#### Budget:

- ▶ \$420,000



# COMPLETED SCHEDULED MAINTENANCE & OTHER PROJECTS

## **Santa Ana College**

- ▶ Chavez Hall Window Repairs
- ▶ Hammond Hall Painting and Louver Removal
- ▶ Buildings C, N, P & R Roof Repairs





## YEAR THREE PROP 39 PROJECTS

### Project Summary:

- ▶ Replace fluorescent and incandescent lights with LED retrofit kits for all applicable interior lights and exterior lights with new LED fixtures at the Digital Media Center and Orange County Sheriff's Regional Training Academy.

### Current Status:

- ▶ RFP was released and completed.
- ▶ Anticipated Board approval of Contractor September 14, 2015.
- ▶ Anticipated Notice to Proceed September 24, 2015.

### Budget:

- ▶ \$335,449.80





# QUESTIONS

---

## **Dunlap Hall Addition & Alterations**

**RSCCD Project Manager:** Darryl Taylor

**Architect:** HMC Architects, Inc.

**Construction Manager:** Linik Corp.

**Contractor:** DPR Construction

**Contract Start:** 4/2/14

**Contract Completion:** 11/09/15

---

**Scope:** The Dunlap Hall Addition & Alterations project will replace the existing aging guard rails around the pedestrian walk ways on all levels of Dunlap Hall, remove the existing elevator and install two new elevators, renovate the restrooms, and provide a new monumental stairway on the south facing end of the new elevators.

**Construction Alerts:**

None

**Status:** Recent construction activities are listed below:

- Demo, patchback, and fiberwrap deck edges at temp manlift locations
- Buildout elevator cabs
- Remove scaffolding around new addition
- Install stainless steel guardrails and infill panels at temp manlift locations

**Upcoming and Current Activities:**

- Paint exterior building
- Apply traffic coating on all decks around existing building and new addition
- Install roofing at new addition
- Finish CMU at elevator fronts
- Grade site for hardscape
- Install unit pavers at walkways
- Pour new sidewalk



*Traffic coating being applied around the remainder of the existing building.*



*Concrete border poured around future walkways to Dunlap Hall.*

HEPSS Task Force  
Health, Emergency Preparedness, Safety and Security  
September 15, 2015  
F-126

---

*The mission of Santa Ana College is to be a leader and partner in meeting the intellectual, cultural, technological, workforce and economic development needs of our diverse community. Santa Ana College prepares students for transfer, employment, careers and lifelong intellectual pursuit in a dynamic learning environment.*

---

MEMBERSHIP

<b>Rebecca Barnard</b>	<b>Renee Miller</b>	<b>Michael Collins</b>	Gary Dominguez	<b>Michael Colver</b>
Sarah Salas	Andy Gonis	<b>Nilo Lipiz</b>	<b>Donald Mahany, Chair</b>	
<b>Don Maus</b>	<b>Alistair Winter</b>	Mark Wheeler		

*Bold font indicates members in attendance  
Meeting called to order – 1:00p.m.*

OLD BUSINESS	DISCUSSION/COMMENTS	ACTIONS/OUTCOME/FOLLOW UPS
Nomination of a new Chairperson	Mahany has been the Chair for three years. Recommended that a new chair be appointed.	Mahany
<b>NEW BUSINESS</b>		
1. Nominations for HEPSS chairperson	We are accepting nominations for chair <b>Mahany was re-elected for another term</b>	Mahany
2. Mark Turner / Renee Miller Ray Stowell removed	Mark turner can longer work on the committee due to scheduling reasons. <b>Renee Miller from DSPS has taken Mark turners position. Ray Stowell was removed from the committee now that Mike Colver is permanent and no longer interim.</b>	Mahany
3. Hazard Mitigation Grant	Brief update on the Hazard Mitigation Grant <b>Don Maus presented earthquake maps indicating the fault lines and what an earthquake on one of those</b>	Maus



	fault lines would mean to the college. The most significant fault line was not San Andreas but the San Joaquin Hills	
4. Great Shakeout Drill	Plans for the Great Shakeout next month./ The drill will take place on 10/15/2015 at 10:15 am and 7:15 pm	Maus/Colver
5. Biola University	Cyber threat to Colleges and University/ Mahany brought this to the attention of the committee as an FYI and to promote discussion. Any cyber-attacks on the college will be handled by IT at the District level	Mahany/Colver/Winter
6. Landscape around A building	Safety concerns with the landscaping around A building and lot 4/ The shrubs need to be cut so as to allow visibility at a car driver level	Winter
7. Safe Trek	A new mobile phone app was presented by Alistair to the committee. This cell phone app makes an emergency phone call to campus security and local PD when activated. It is available to students and all members of RSCCD and their friends.	
<b>STANDING REPORTS</b>	<b>DISCUSSION/COMMENTS</b>	<b>ACTIONS/OUTCOME/FOLLOW UPS</b>
SAC – Mike Colver	Report made by Colver and found to be assaults and no bicycle thefts	Colver
Risk Management – Don Maus	Report made by Maus and found to be minor slip and falls	Maus
Next Meeting	October 1, 2015	



## Facilities Update

9/15/2015

- Over the summer we received 399 work orders. 334 were completed and 47 are still open pending completion. The balance are awaiting approval from the respective Deans.
- The necessary repairs to the lighting system on College Avenue were completed. The issue was found to be two broken pieces of conduit in the street.
- The landscape contractor is on site to complete the annual tree trimming. Should be completed in the next few weeks.
- Completed a remodel of R101 and R119. The old Veterans center became two new math classrooms. Walls and a door were removed, the rooms were repainted (along with the ceilings) and the carpet was replaced. In addition, we replaced the electric sliding door to R101 with a standard door as the old system was unreliable and inconvenient.
- Room R228 was converted from a photo processing area to two classrooms. All of the sub walls were removed, lighting installed, walls and ceilings painted and carpet installed.
- The ceilings in R126 and R219 were painted to lighten the rooms and make them more presentable for students.
- We remodeled the assessment center in L building. Rooms L221, L223 and L225 were repainted, a window between L223 and L225 was installed and new carrels were installed to accommodate the students. The offices were moved from L221 to L223 to allow line of sight from the offices to both testing rooms.
- We are waiting for the PIN code locks for the F building. They have been delayed by the factory due to the new style of trim we need for the campus key system conversion. They should be in by the end of September.

- The water line that feeds T building sprung a leak. It was repaired and the below ground valve was replaced.
- As the louvers were removed from the exterior of the H building, in preparation for replacement windows, new blinds were installed in H207 and we have received a quote for the replacement of the balance of the blinds on the north side of the building.
- In room H210, Pharmacology, we removed a circular computer station in preparation for a cleanroom. Data and electrical were moved to the north desk area and 10 new computers were installed. The cleanroom will be on site by late October, early November.
- Finished bathroom installation and floor coating in K buildings robotic welder lab.



COLLEGE & UNIVERSITY  
RECYCLING COALITION

[Home](#) | [About](#) | [Resources](#) | [Webinars](#) | [Events & Workshops](#) | [Sponsors](#) | [Contact Us](#)

JOIN CURC!

[Join CURC](#) or [LOGIN](#)

UPCOMING EVENTS



[CURC CALENDAR](#)

GET INVOLVED!



FOLLOW US ON TWITTER



ATTEND AN EVENT



BECOME A VOLUNTEER

## Getting Credit For Recycling & Materials Management

*Finding and documenting GHG emission savings from your waste reduction efforts.*

*This program took place on February 26, 2015*

Recycling and materials management programs are the foundation of campus sustainability programs but are often treated as a minor source of potential GHG emission savings. In this webinar we will discuss how to make sure you're getting credit for GHG emission reductions on your campus, from the embodied energy in materials up front to tracking GHG footprint of various waste disposal methods on the back end.

## Presenters

- **Travis Friedman**, University of Puget Sound (*Moderator*)
- **Jenny McNamara** and **Anthony Hair**, Portland State University
- **Brett Pasinella**, Second Nature
- **Stacy Wheeler**, RecycleMania

## Audio Recording

> [Click here](#) to download this webinar.

*\*note: file may take up to a half hour to download (74MB)*

## Presentation Slides

-> [Click here](#) to view slides. [PDF]

- Free to join
- Provides Resources to Higher Edu
- Does SAC have a Climate Action Plan?
- Example at Right.

# CURC



## Climate Action Plan

- **REDUCE** solid waste generated on campus by 25% (2008 baseline)
- **REDUCE** embodied emissions for select commodities by 25% (2008 baseline)
- **REDUCE** landfill-bound waste to 10% of total waste generated



# Possible Goals/Ideas!

## 3.) REDUCE EMBODIED EMISSIONS FOR SELECT COMMODITIES BY 25% (2008 BASELINE)

- Refine data collection for embodied emissions
- Modify food purchasing contract requirements
- Evaluate opportunities to increase low carbon food purchases
- Establish formal Relationships with Reuse organizations
- Paper-reduction and awareness campaign
- Landscape plan for the University



# Reuse





# Reuse



## Sustainable Drinking Water Taskforce



## HYDRATE HERE





# Food



39% of food  
purchases come  
from LOCAL  
sources

**MEATLESS MONDAY**  
WHAT IS

Meatless Monday is an Initiative to reduce meat and consumption by 15% in order to improve your personal health and the health of the planet. The program was originally started during World War I when the U.S. Food Administration urged families to reduce consumption of key staples to aid the war effort. Today the effort is aimed at the prevalence of preventable illness associated with excessive meat consumption.

**6 MAJOR BENEFITS OF JUST ONE DAY WITHOUT MEAT**

- MINIMIZE WATER CONSUMPTION**  
★ It takes 1,800 to 2,500 gallons of water to raise and process one pound of beef
- REDUCE FOSSIL FUEL DEPENDENCE**  
★ 48 calories of fossil fuel energy go into every calorie of feed lot beef
- CURB OBESITY**  
★ People on low-meat diets have significantly lower body weights and body mass indices
- FIGHT CANCER**  
★ meat consumption is associated with colon cancer
- REDUCE YOUR CARBON FOOTPRINT**  
★ 1/5th of greenhouse gas emission is from meat production
- REDUCE HEART DISEASE**  
★ Replacing saturated fats with polyunsaturated fats (vegetables) reduces the risk of heart disease

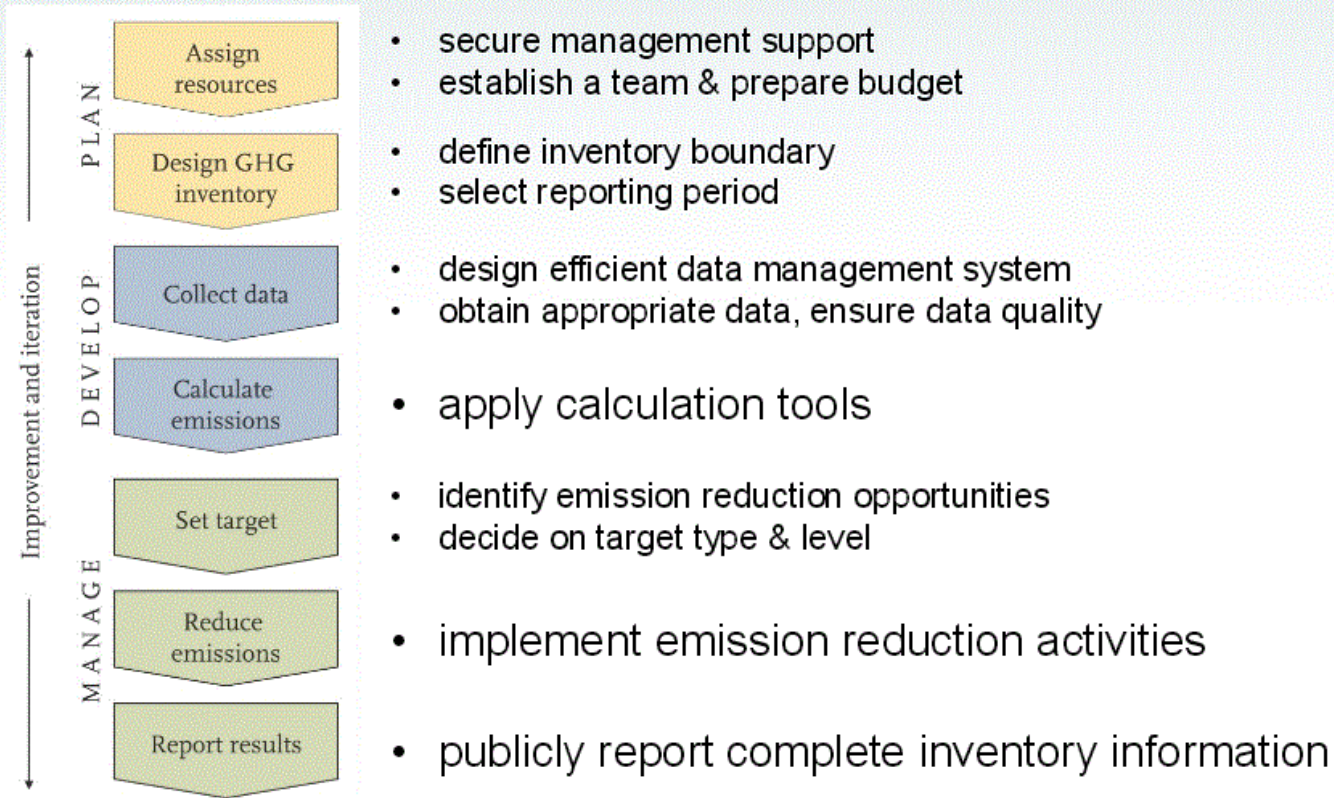
For more information go to [meatlessmonday.com](http://meatlessmonday.com) and [psu.edu](http://psu.edu)

VICTOR'S will be celebrating Meatless Monday once a month.

Portland State University



# Carbon Management Process



# Reduce GHGs

## GHGs from Waste Disposal

- Generally, diverted (reused, recycled, etc.) waste is *not* included in a GHG inventory
- GHG emissions are determined by the ultimate disposal method (type of incineration or landfill)

### *Implications*

1. Increased diversion rate always lowers emissions
2. Choosing waste haulers, disposal sites, etc. is important