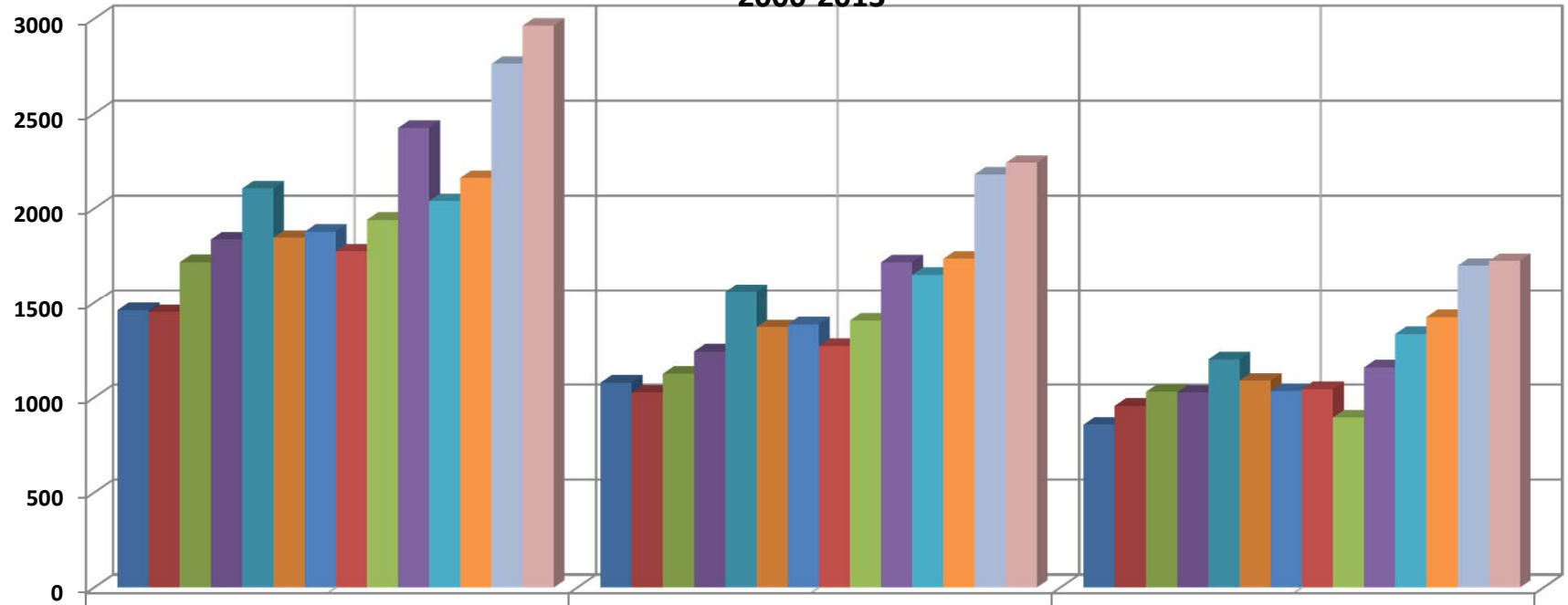
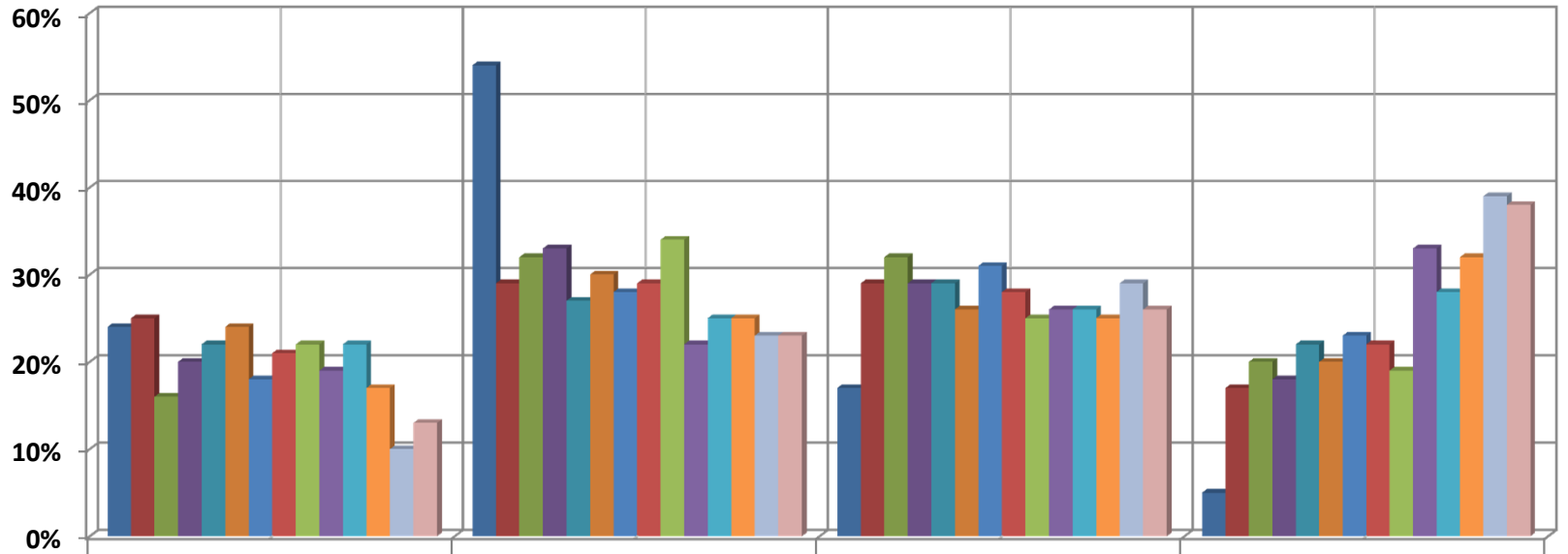


**SAUSD REGISTRATION 14 YEAR TREND
SANTA ANA COLLEGE OUTREACH
2000-2013**



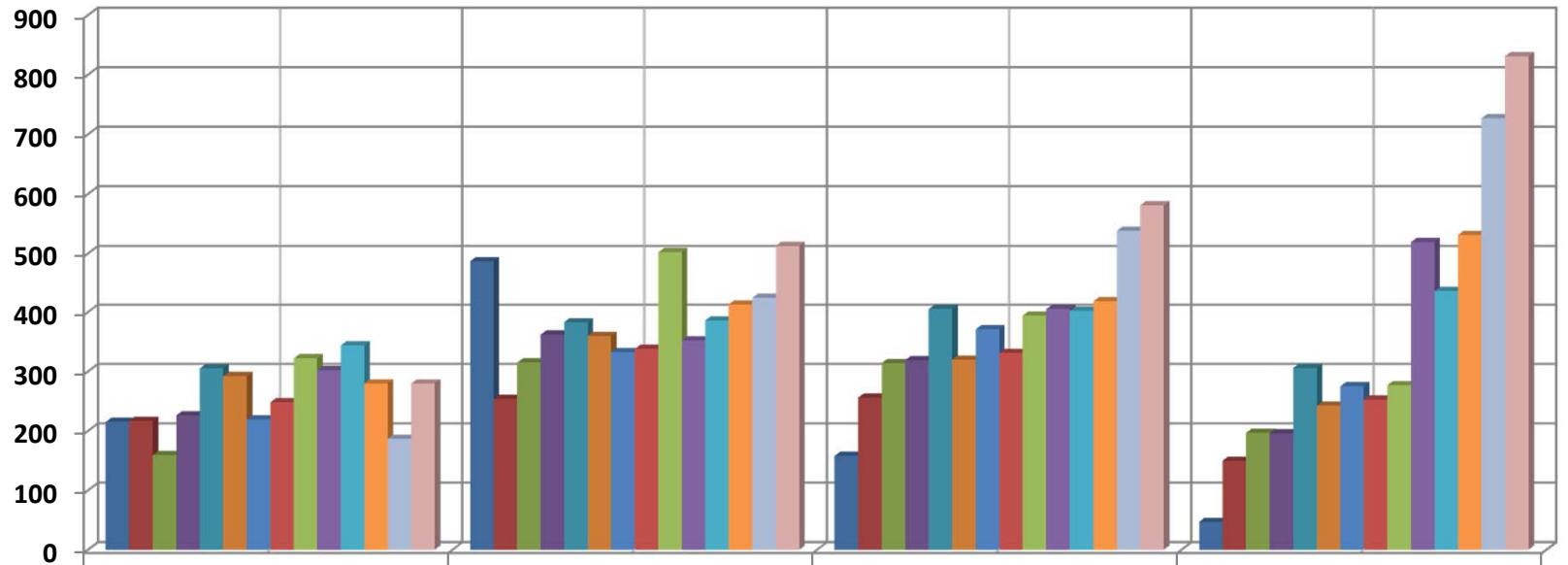
	Apps. Comp'd	Tested	Registered
■ SAUSD 2000	1461	1079	858
■ SAUSD 2001	1451	1026	957
■ SAUSD 2002	1718	1126	1030
■ SAUSD 2003	1838	1243	1027
■ SAUSD 2004	2106	1560	1201
■ SAUSD 2005	1846	1371	1089
■ SAUSD 2006	1878	1386	1034
■ SAUSD 2007	1775	1272	1045
■ SAUSD 2008	1941	1406	895
■ SAUSD 2009	2425	1717	1159
■ SAUSD 2010	2040	1651	1335
■ SAUSD 2011	2162	1736	1424
■ SAUSD 2012	2763	2180	1699
■ SAUSD 2013	2964	2241	1724

**SAUSD ENGLISH PERCENTAGE 14 YEAR TREND
SANTA ANA COLLEGE OUTREACH
2000-2013**



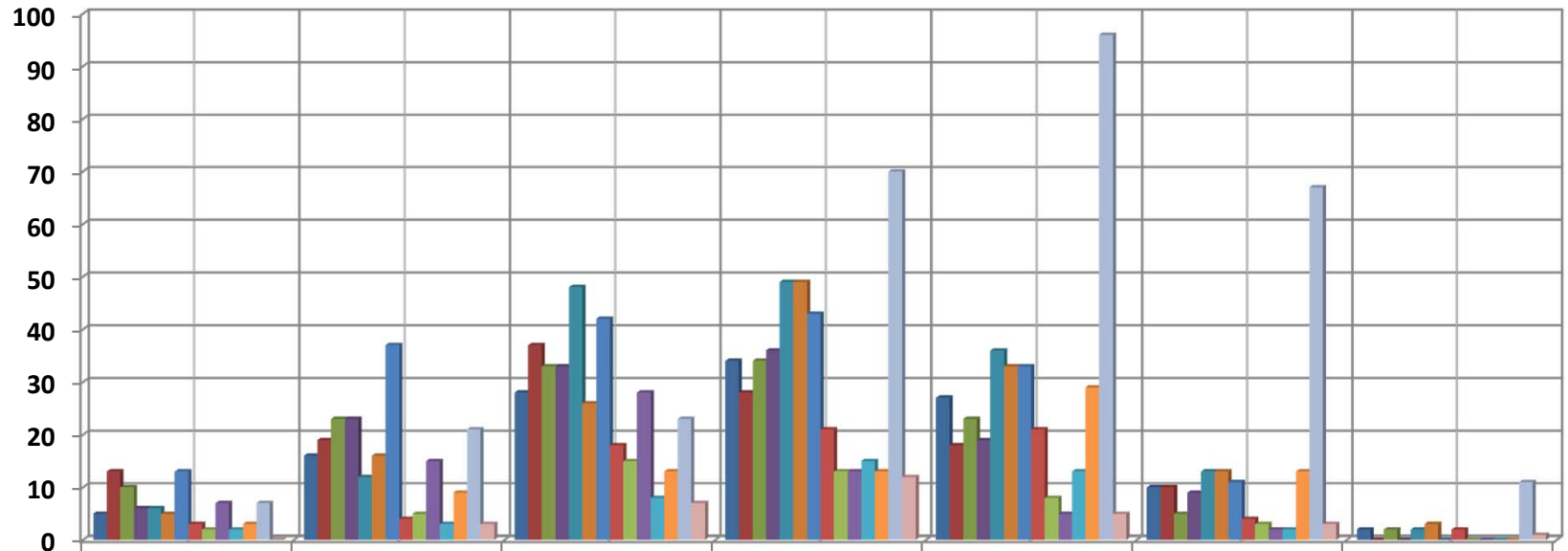
	Eng n50	Eng n60	Eng 061	Eng 101
SAUSD 2000 n=907	24%	54%	17%	5%
SAUSD 2001 n=877	25%	29%	29%	17%
SAUSD 2002 n=985	16%	32%	32%	20%
SAUSD 2003 n=1103	20%	33%	29%	18%
SAUSD 2004 n=1399	22%	27%	29%	22%
SAUSD 2005 n=1214	24%	30%	26%	20%
SAUSD 2006 n=1222	18%	28%	31%	23%
SAUSD 2007 n=1167	21%	29%	28%	22%
SAUSD 2008 n=1495	22%	34%	25%	19%
SAUSD 2009 n=1578	19%	22%	26%	33%
SAUSD 2010 n=1567	22%	25%	26%	28%
SAUSD 2011 n=1642	17%	25%	25%	32%
SAUSD 2012 n=1876	10%	23%	29%	39%
SAUSD 2013 n=2205	13%	23%	26%	38%

**SAUSD ENGLISH PLACEMENT 14 YEAR TREND
SANTA ANA COLLEGE OUTREACH
2000-20124**



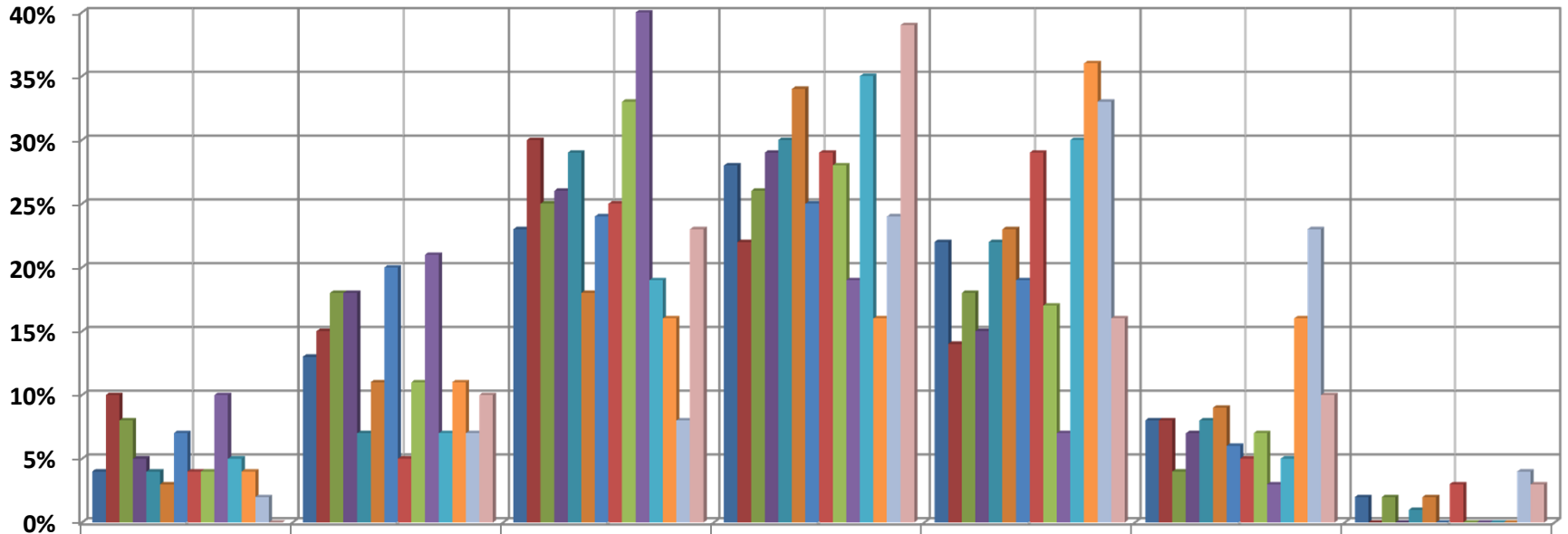
	Eng n50	Eng n60	Eng 061	Eng 101
■ SAUSD 2000 n=907	215	487	158	47
■ SAUSD 2001 n=877	217	254	256	150
■ SAUSD 2002 n=985	159	315	314	197
■ SAUSD 2003 n=1103	226	362	319	196
■ SAUSD 2004 n=1399	305	383	405	306
■ SAUSD 2005 n=1214	292	360	320	242
■ SAUSD 2006 n=1198	219	333	371	275
■ SAUSD 2007 n=1167	248	338	331	253
■ SAUSD 2008 n=1495	322	502	394	277
■ SAUSD 2009 n=1578	302	352	405	519
■ SAUSD 2010 n=1567	344	386	402	435
■ SAUSD 2011 n=1642	280	413	418	531
■ SAUSD 2012 n=1876	187	424	538	727
■ SAUSD 2013 n=2205	280	513	581	831

**SAUSD TELD PLACEMENT 14 YEAR TREND
SANTA ANA COLLEGE OUTREACH
2000-2013**



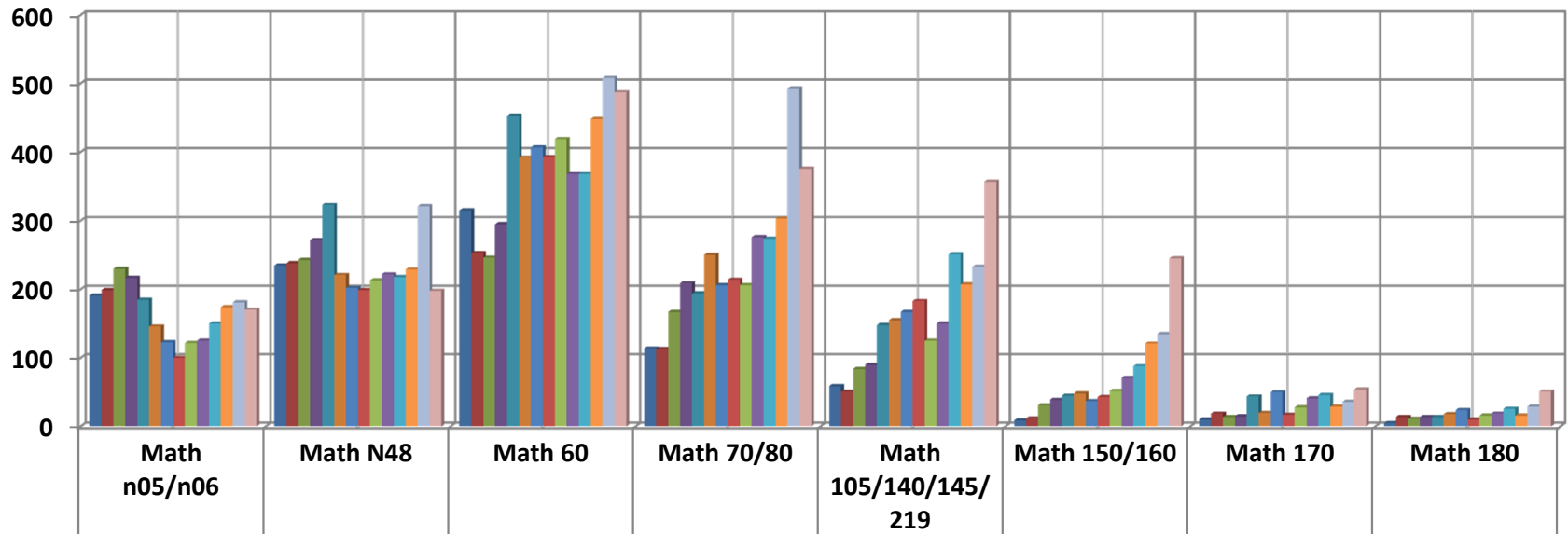
	ESL n40	ESL n49	EMLS 055	EMLS 107	EMLS 109	EMLS110	EMLS 112
■ SAUSD 2000 n=122	5	16	28	34	27	10	2
■ SAUSD 2001 n=125	13	19	37	28	18	10	0
■ SAUSD 2002 n=130	10	23	33	34	23	5	2
■ SAUSD 2003 n=126	6	23	33	36	19	9	0
■ SAUSD 2004 n=166	6	12	48	49	36	13	2
■ SAUSD 2005 n=145	5	16	26	49	33	13	3
■ SAUSD 2006 n=179	13	37	42	43	33	11	0
■ SAUSD 2007 n=73	3	4	18	21	21	4	2
■ SAUSD 2008 n=46	2	5	15	13	8	3	0
■ SAUSD 2009 n=70	7	15	28	13	5	2	0
■ SAUSD 2010 n=43	2	3	8	15	13	2	0
■ SAUSD 2011 n=80	3	9	13	13	29	13	0
■ SAUSD 2012 n=295	7	21	23	70	96	67	11
■ SAUSD 2013 n=31	0	3	7	12	5	3	1

**SAUSD TELD PERCENTAGE 14 YEAR TREND
SANTA ANA COLLEGE OUTREACH
2000-2013**



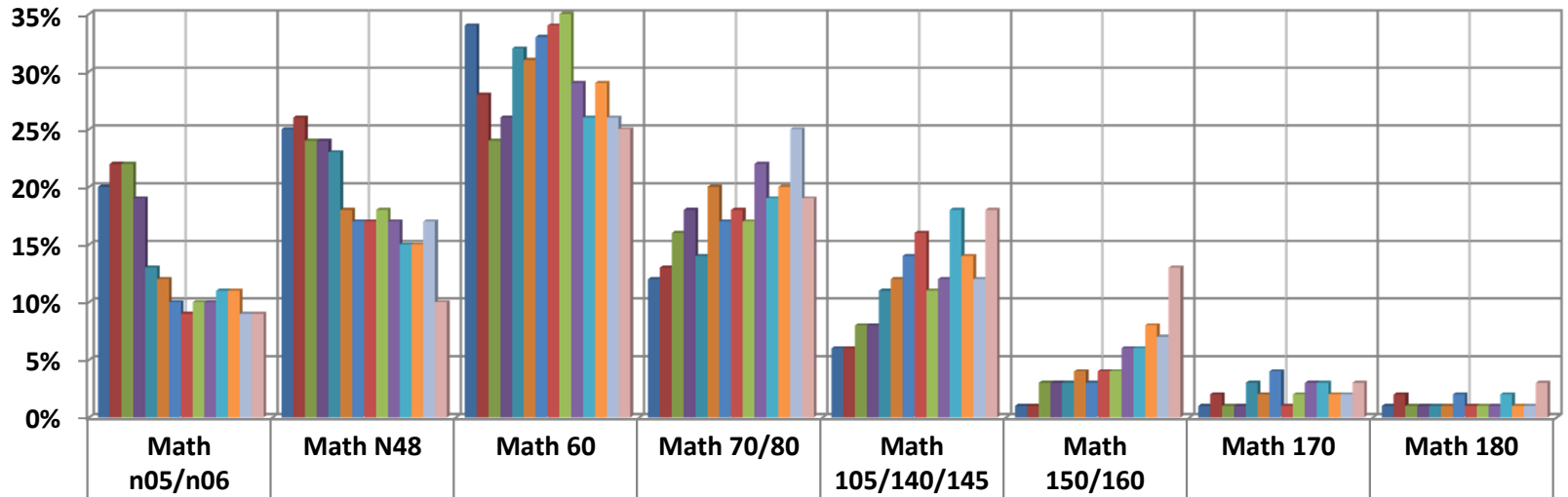
	ESL n40	ESL n49	EMLS 055	EMLS 107	EMLS 109	EMLS110	EMLS 112
SAUSD 2000 n=122	4%	13%	23%	28%	22%	8%	2%
SAUSD 2001 n=125	10%	15%	30%	22%	14%	8%	0%
SAUSD 2002 n=130	8%	18%	25%	26%	18%	4%	2%
SAUSD 2003 n=126	5%	18%	26%	29%	15%	7%	0%
SAUSD 2004 n=166	4%	7%	29%	30%	22%	8%	1%
SAUSD 2005 n=145	3%	11%	18%	34%	23%	9%	2%
SAUSD 2006 n=182	7%	20%	24%	25%	19%	6%	0%
SAUSD 2007 n=73	4%	5%	25%	29%	29%	5%	3%
SAUSD 2008 n=46	4%	11%	33%	28%	17%	7%	0%
SAUSD 2009 n=70	10%	21%	40%	19%	7%	3%	0%
SAUSD 2010 n=43	5%	7%	19%	35%	30%	5%	0%
SAUSD 2011 n=80	4%	11%	16%	16%	36%	16%	0%
SAUSD 2012 n=295	2%	7%	8%	24%	33%	23%	4%
SAUSD 2013 n=31	0%	10%	23%	39%	16%	10%	3%

**SAUSD MATH PLACEMENT 14 YEAR TREND
SANTA ANA COLLEGE OUTREACH
2000-2013**



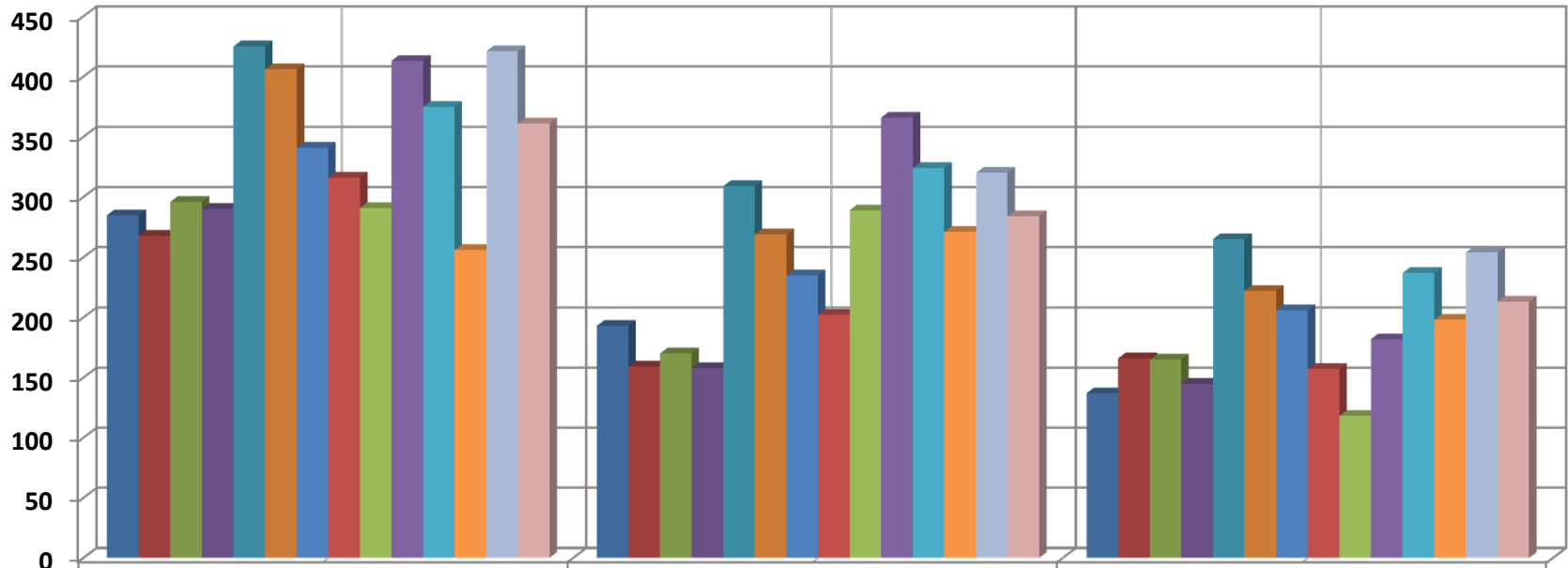
	Math n05/n06	Math N48	Math 60	Math 70/80	Math 105/140/145/219	Math 150/160	Math 170	Math 180
SAUSD 2000 n=938	191	235	315	114	59	9	10	5
SAUSD 2001 n=899	199	238	253	113	51	12	19	14
SAUSD 2002 n=1026	230	243	246	167	84	31	14	11
SAUSD 2003 n=1152	217	272	295	209	90	39	15	14
SAUSD 2004 n=1406	185	323	453	194	148	45	44	14
SAUSD 2005 n=1250	146	221	392	250	155	48	20	18
SAUSD 2006 n=1216	123	202	407	206	167	37	50	24
SAUSD 2007 n=1163	100	199	393	214	183	43	17	10
SAUSD 2008 n=1181	122	213	419	206	125	52	28	16
SAUSD 2009 n=1272	125	222	368	276	150	71	41	19
SAUSD 2010 n=1421	150	218	368	274	251	88	46	26
SAUSD 2011 n=1527	174	229	448	303	207	121	29	16
SAUSD 2012 n=1936	181	321	508	493	233	135	36	29
SAUSD 2013 n=1938	170	198	487	376	357	245	54	51

**SAUSD MATH PERCENTAGE 14 YEAR TREND
SANTA ANA COLLEGE OUTREACH
2000-2013**



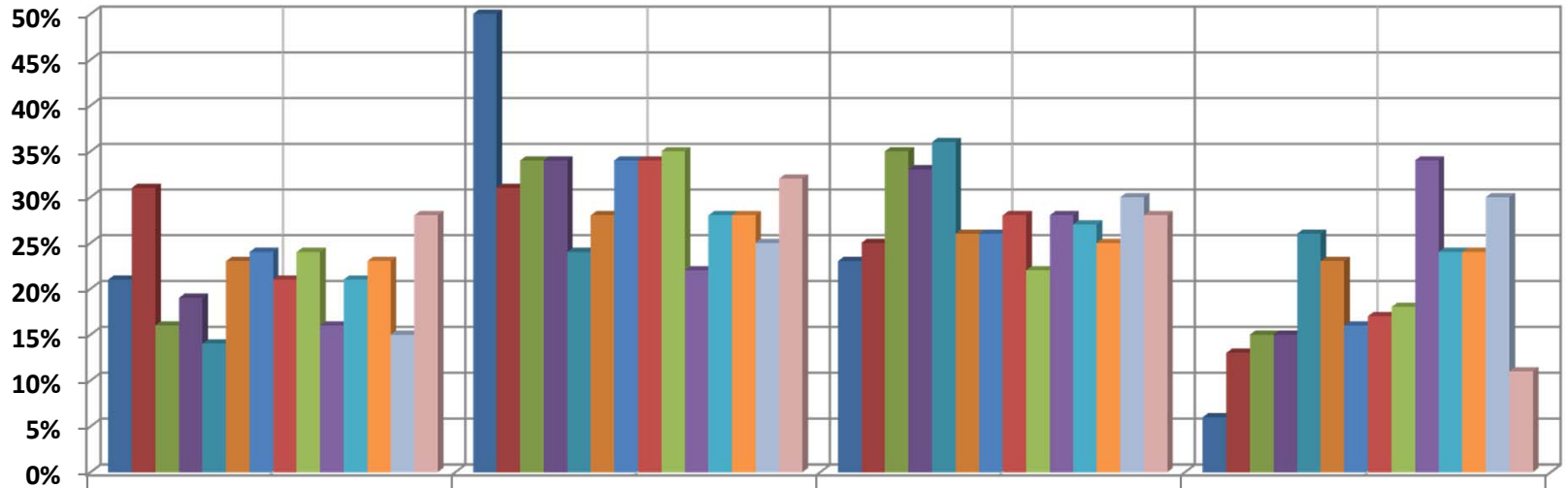
	Math n05/n06	Math N48	Math 60	Math 70/80	Math 105/140/145/219	Math 150/160	Math 170	Math 180
■ SAUSD 2000 n=938	20%	25%	34%	12%	6%	1%	1%	1%
■ SAUSD 2001 n =899	22%	26%	28%	13%	6%	1%	2%	2%
■ SAUSD 2002 n=1026	22%	24%	24%	16%	8%	3%	1%	1%
■ SAUSD 2003 n=1152	19%	24%	26%	18%	8%	3%	1%	1%
■ SAUSD 2004 n=1406	13%	23%	32%	14%	11%	3%	3%	1%
■ SAUSD 2005 n=1250	12%	18%	31%	20%	12%	4%	2%	1%
■ SAUSD 2006 n=1216	10%	17%	33%	17%	14%	3%	4%	2%
■ SAUSD 2007 n= 1163	9%	17%	34%	18%	16%	4%	1%	1%
■ SAUSD 2008 n=1181	10%	18%	35%	17%	11%	4%	2%	1%
■ SAUSD 2009 n=1272	10%	17%	29%	22%	12%	6%	3%	1%
■ SAUSD 2010 n=1421	11%	15%	26%	19%	18%	6%	3%	2%
■ SAUSD 2011 n=1527	11%	15%	29%	20%	14%	8%	2%	1%
■ SAUSD 2012 n=1936	9%	17%	26%	25%	12%	7%	2%	1%
■ SAUSD 2013 n=1938	9%	10%	25%	19%	18%	13%	3%	3%

**CENTURY REGISTRATION 14 YEAR TREND
SANTA ANA COLLEGE OUTREACH
2000-2013**



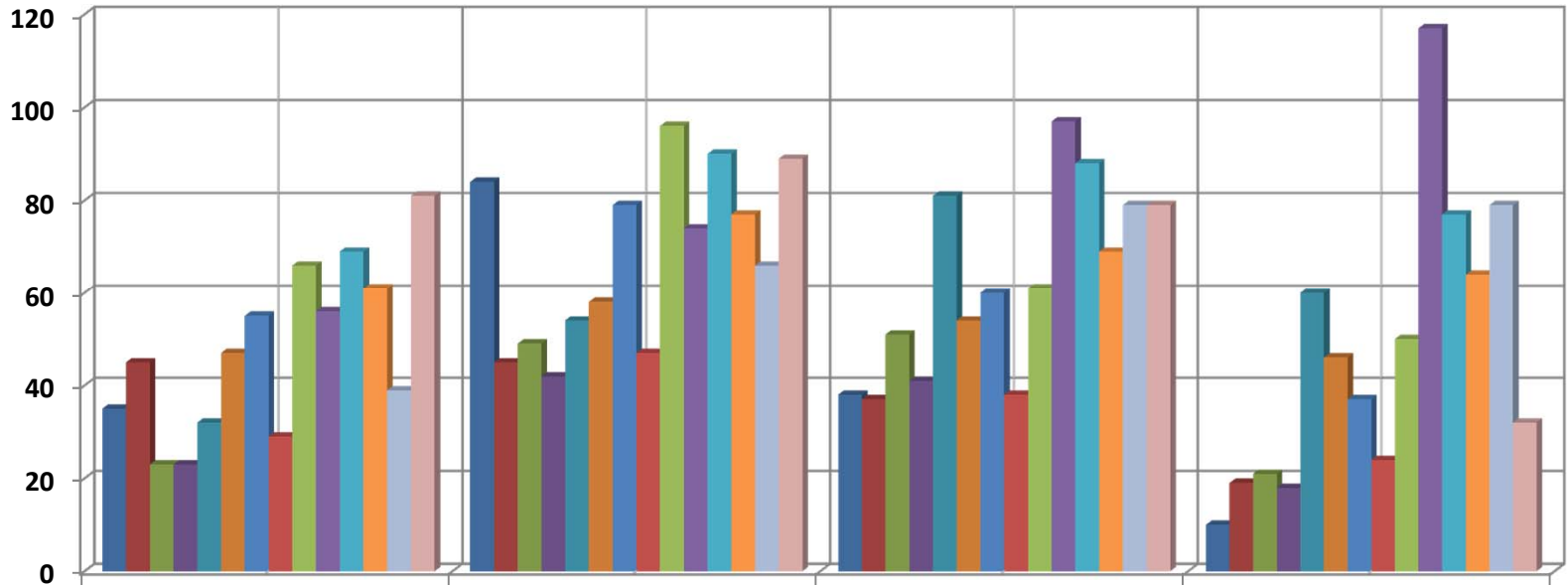
	Apps. Comp'd	Tested	Registered
Century 2000	285	193	137
Century 2001	268	159	166
Century 2002	296	170	165
Century 2003	290	158	145
Century 2004	425	309	265
Century 2005	406	269	222
Century 2006	341	235	206
Century 2007	316	202	157
Century 2008	291	289	118
Century 2009	413	366	182
Century 2010	375	324	237
Century 2011	256	271	198
Century 2012	421	320	254
Century 2013	361	284	213

**CENTURY ENGLISH PERCENTAGE 14 YEAR TREND
SANTA ANA COLLEGE OUTREACH
2000-2013**



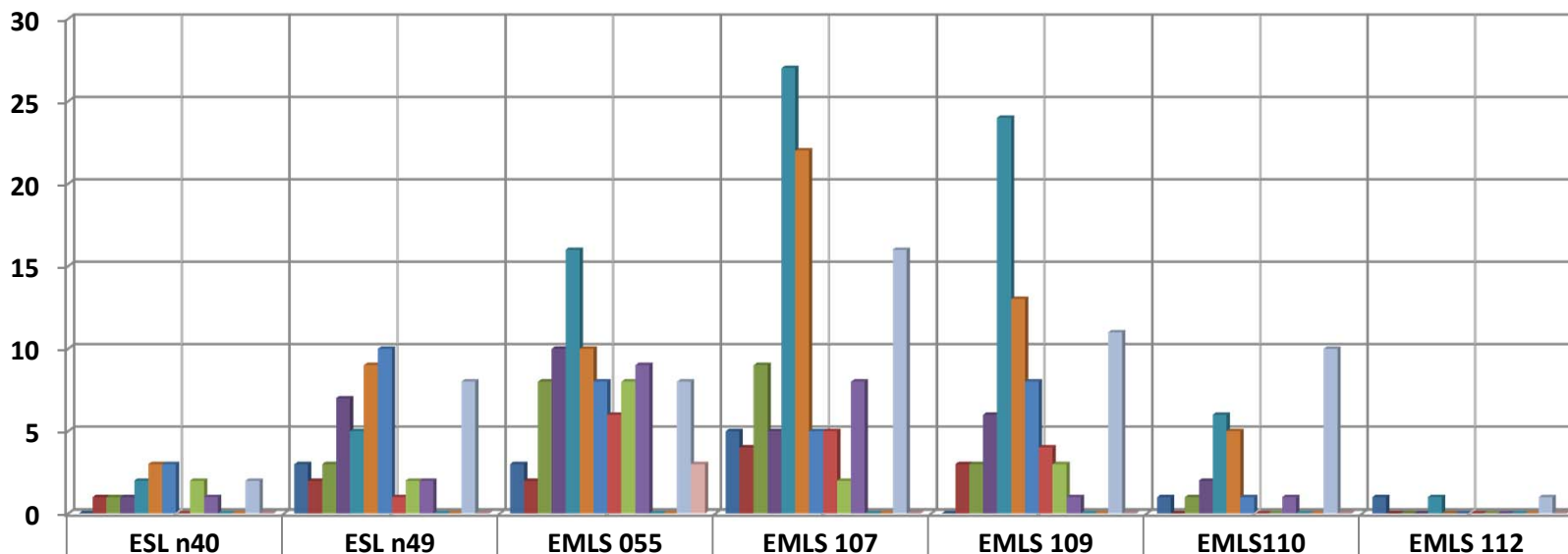
	Eng n50	Eng n60	Eng 061	Eng 101
■ Century 2000 n=167	21%	50%	23%	6%
■ Century 2001 n=146	31%	31%	25%	13%
■ Century 2002 n=144	16%	34%	35%	15%
■ Century 2003 n=124	19%	34%	33%	15%
■ Century 2004 n=227	14%	24%	36%	26%
■ Century 2005 n=205	23%	28%	26%	23%
■ Century 2006 n=231	24%	34%	26%	16%
■ Century 2007 n=138	21%	34%	28%	17%
■ Century 2008 n=273	24%	35%	22%	18%
■ Century 2009 n=344	16%	22%	28%	34%
■ Century 2010 n=237	21%	28%	27%	24%
■ Century 2011 n=271	23%	28%	25%	24%
■ Century 2012 n=263	15%	25%	30%	30%
■ Century 2013 n=281	28%	32%	28%	11%

**CENTURY ENGLISH PLACEMENT 14 YEAR TREND
SANTA ANA COLLEGE OUTREACH
2000-2013**



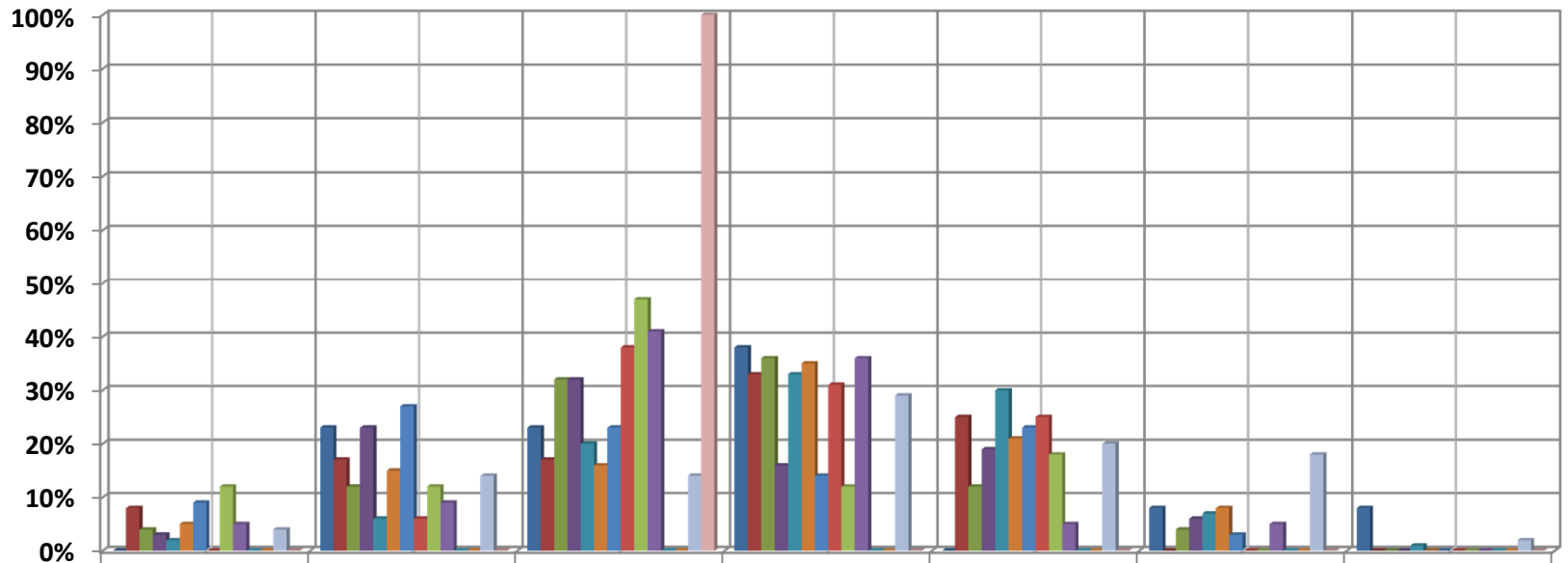
	Eng n50	Eng n60	Eng 061	Eng 101
Century 2000 n=167	35	84	38	10
Century 2001 n=146	45	45	37	19
Century 2002 n=144	23	49	51	21
Century 2003 n=124	23	42	41	18
Century 2004 n=227	32	54	81	60
Century 2005 n=205	47	58	54	46
Century 2006 n=231	55	79	60	37
Century 2007 n=138	29	47	38	24
Century 2008 n=273	66	96	61	50
Century 2009 n=344	56	74	97	117
Century 2010 n=324	69	90	88	77
Century 2011 n=271	61	77	69	64
Century 2012 n=263	39	66	79	79
Century 2013 n=281	81	89	79	32

**CENTURY TELD PLACEMENT 14 YEAR TREND
SANTA ANA COLLEGE OUTREACH
2000-2013**



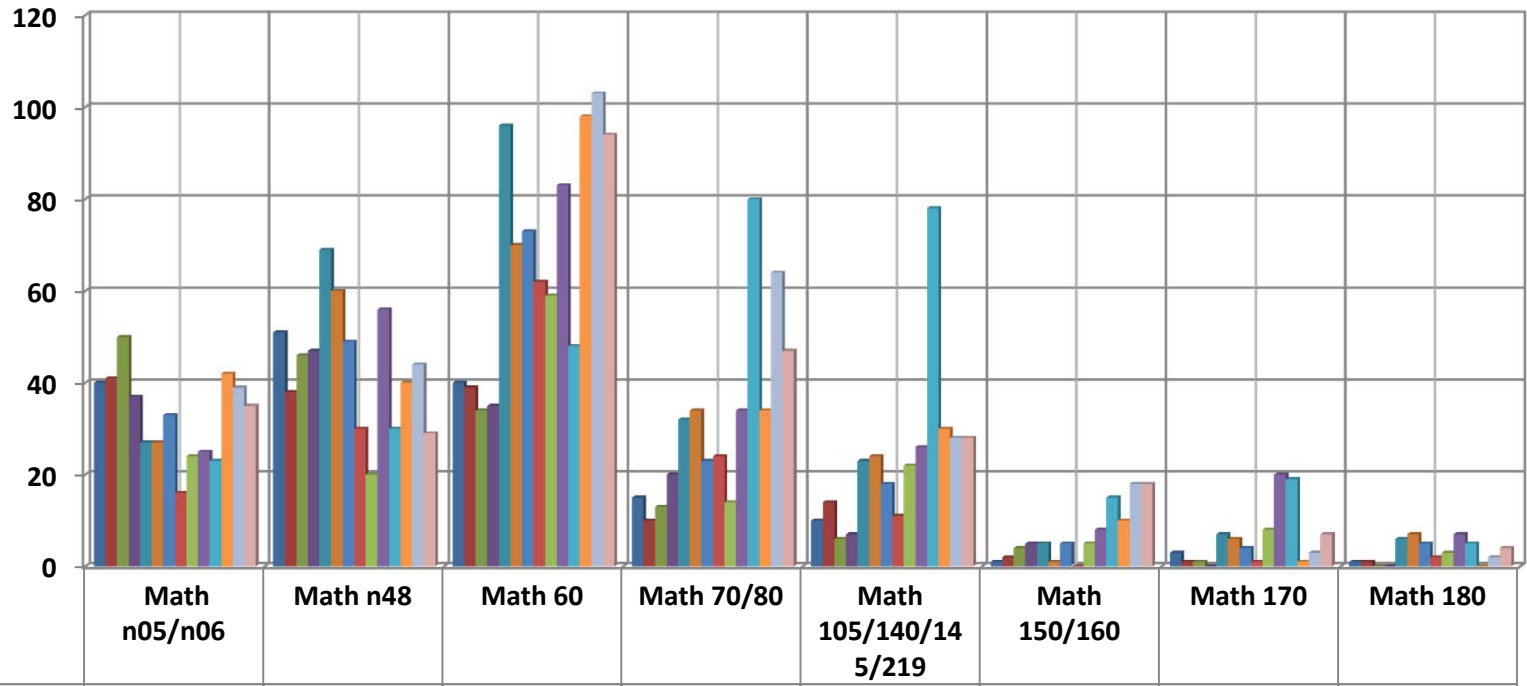
	ESL n40	ESL n49	EMLS 055	EMLS 107	EMLS 109	EMLS110	EMLS 112
■ Century 2000 n=13	0	3	3	5	0	1	1
■ Century 2001 n=12	1	2	2	4	3	0	0
■ Century 2002 n=25	1	3	8	9	3	1	0
■ Century 2003 n=31	1	7	10	5	6	2	0
■ Century 2004 n=81	2	5	16	27	24	6	1
■ Century 2005 n=62	3	9	10	22	13	5	0
■ Century 2006 n=35	3	10	8	5	8	1	0
■ Century 2007 n=16	0	1	6	5	4	0	0
■ Century 2008 n=17	2	2	8	2	3	0	0
■ Century 2009 n=22	1	2	9	8	1	1	0
■ Century 2010 n=0	0	0	0	0	0	0	0
■ Century 2011 n=0	0	0	0	0	0	0	0
■ Century 2012 n=56	2	8	8	16	11	10	1
■ Century 2013 n=3	0	0	3	0	0	0	0

**CENTURY TELD PERCENTAGE 14 YEAR TREND
SANTA ANA COLLEGE OUTREACH
2000-2013**



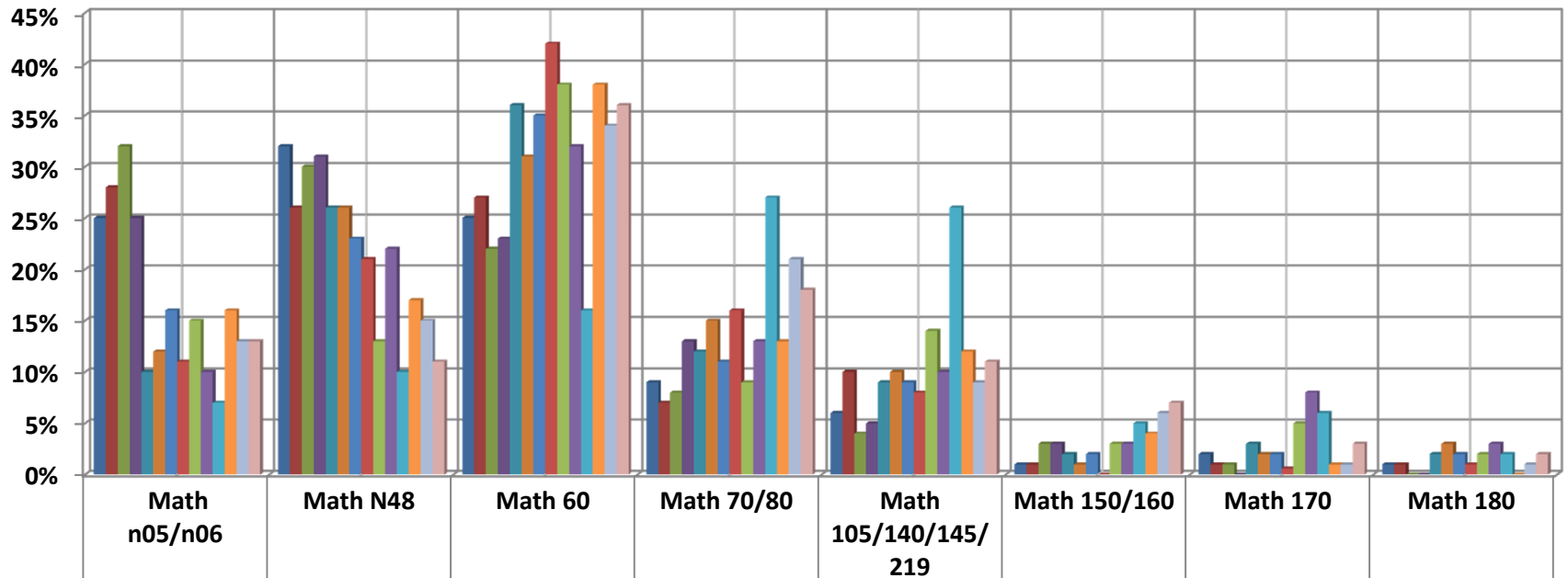
	ESL n40	ESL n49	EMLS 055	EMLS 107	EMLS 109	EMLS110	EMLS 112
■ Century 2000 n=13	0%	23%	23%	38%	0%	8%	8%
■ Century 2001 n=12	8%	17%	17%	33%	25%	0%	0%
■ Century 2002 n=25	4%	12%	32%	36%	12%	4%	0%
■ Century 2003 n=31	3%	23%	32%	16%	19%	6%	0%
■ Century 2004 n=81	2%	6%	20%	33%	30%	7%	1%
■ Century 2005 n=62	5%	15%	16%	35%	21%	8%	0%
■ Century 2006 n=35	9%	27%	23%	14%	23%	3%	0%
■ Century 2007 n=16	0%	6%	38%	31%	25%	0%	0%
■ Century 2008 n=17	12%	12%	47%	12%	18%	0%	0%
■ Century 2009 n=22	5%	9%	41%	36%	5%	5%	0%
■ Century 2010 n=0	0%	0%	0%	0%	0%	0%	0%
■ Century 2011 n=0	0%	0%	0%	0%	0%	0%	0%
■ Century 2012 n=56	4%	14%	14%	29%	20%	18%	2%
■ Century 2013 n=3	0%	0%	100%	0%	0%	0%	0%

**CENTURY MATH PLACEMENT 14 YEAR TREND
SANTA ANA COLLEGE OUTREACH
2000-2013**



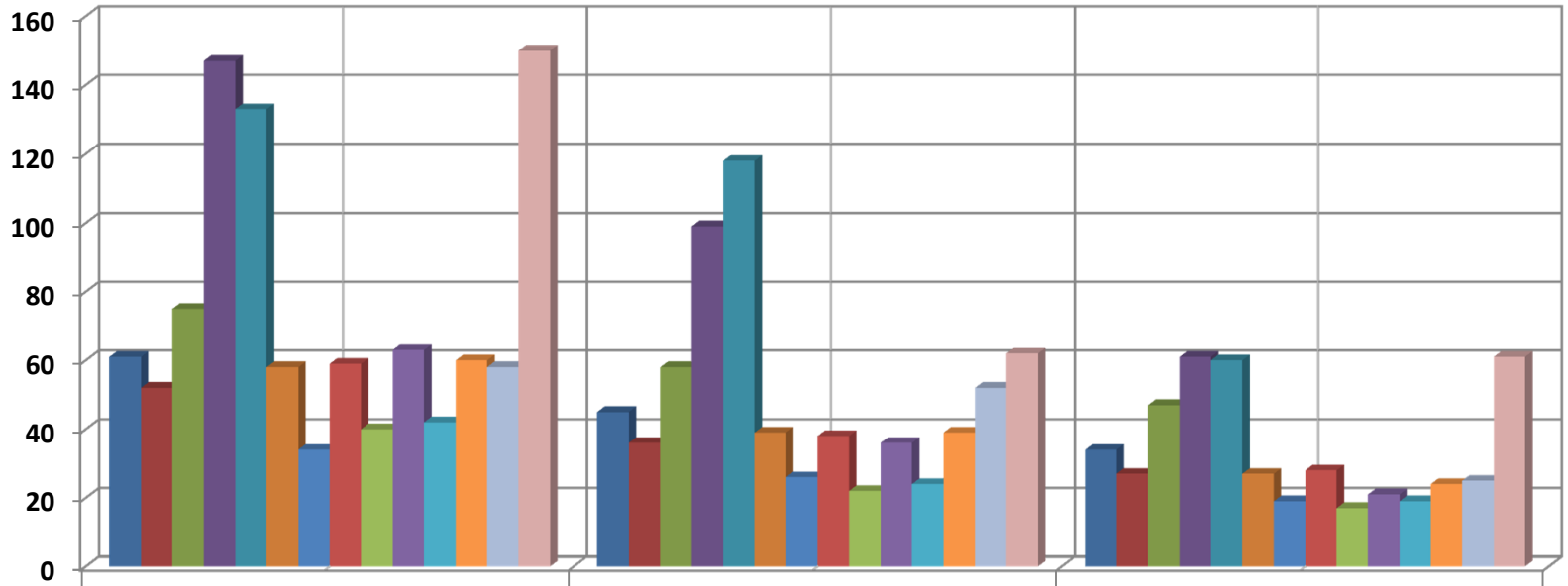
	Math n05/n06	Math n48	Math 60	Math 70/80	Math 105/140/145/219	Math 150/160	Math 170	Math 180
■ Century 2000 n=161	40	51	40	15	10	1	3	1
■ Century 2001 n=146	41	38	39	10	14	2	1	1
■ Century 2002 n=154	50	46	34	13	6	4	1	0
■ Century 2003 n=151	37	47	35	20	7	5	0	0
■ Century 2004 n=265	27	69	96	32	23	5	7	6
■ Century 2005 n=229	27	60	70	34	24	1	6	7
■ Century 2006 n=210	33	49	73	23	18	5	4	5
■ Century 2007 n=146	16	30	62	24	11	0	1	2
■ Century 2008 n=155	24	20	59	14	22	5	8	3
■ Century 2009 n=259	25	56	83	34	26	8	20	7
■ Century 2010 n=298	23	30	48	80	78	15	19	5
■ Century 2011 n=255	42	40	98	34	30	10	1	0
■ Century 2012 n=301	39	44	103	64	28	18	3	2
■ Century 2013 n=262	35	29	94	47	28	18	7	4

**CENTURY MATH PERCENTAGE 14 YEAR TREND
SANTA ANA COLLEGE OUTREACH
2000-2013**



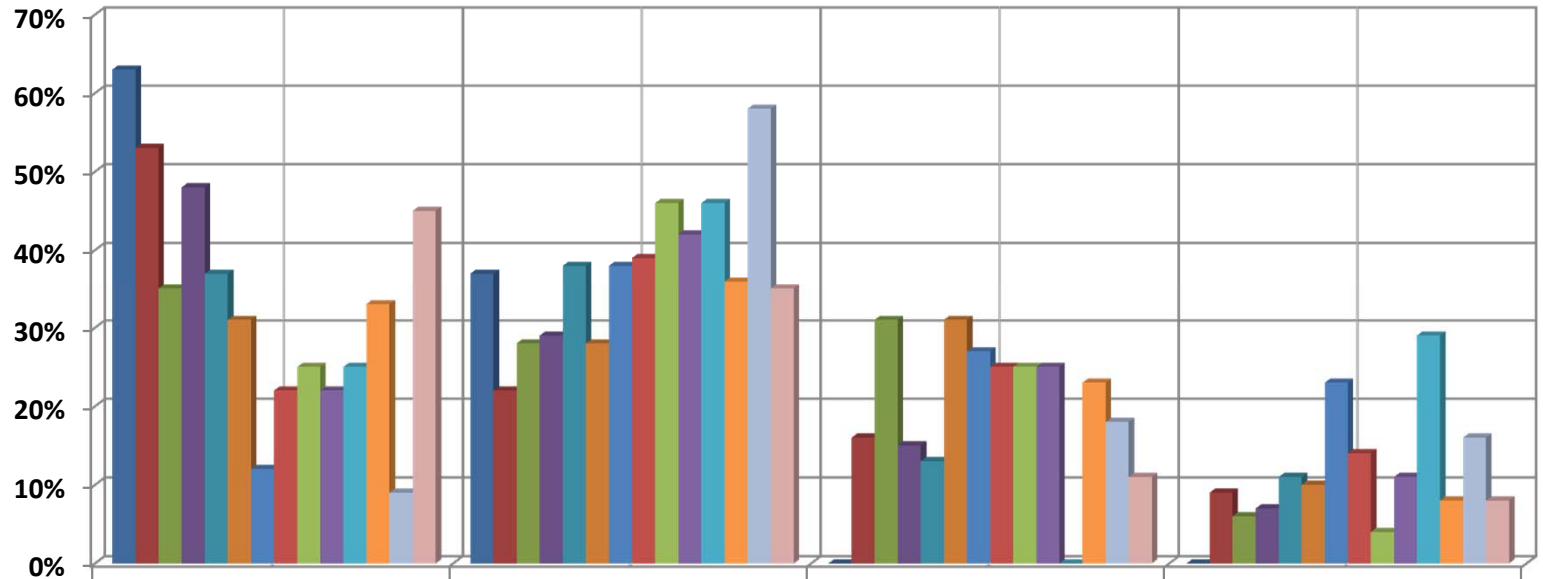
■ Century 2000 n=161	25%	32%	25%	9%	6%	1%	2%	1%
■ Century 2001 n=146	28%	26%	27%	7%	10%	1%	1%	1%
■ Century 2002 n=154	32%	30%	22%	8%	4%	3%	1%	0%
■ Century 2003 n=151	25%	31%	23%	13%	5%	3%	0%	0%
■ Century 2004 n=265	10%	26%	36%	12%	9%	2%	3%	2%
■ Century 2005 n=229	12%	26%	31%	15%	10%	1%	2%	3%
■ Century 2006 n=210	16%	23%	35%	11%	9%	2%	2%	2%
■ Century 2007 n=146	11%	21%	42%	16%	8%	0%	1%	1%
■ Century 2008 n=155	15%	13%	38%	9%	14%	3%	5%	2%
■ Century 2009 n=259	10%	22%	32%	13%	10%	3%	8%	3%
■ Century 2010 n=298	7%	10%	16%	27%	26%	5%	6%	2%
■ Century 2011 n=255	16%	17%	38%	13%	12%	4%	1%	0%
■ Century 2012 n=301	13%	15%	34%	21%	9%	6%	1%	1%
■ Century 2013 n=262	13%	11%	36%	18%	11%	7%	3%	2%

**CESAR CHAVEZ REGISTRATION 14 YEAR TREND
SANTA ANA COLLEGE OUTREACH
2000-2013**



	Apps. Comp'd	Tested	Registered
■ Cesar Chavez 2000	61	45	34
■ Cesar Chavez 2001	52	36	27
■ Cesar Chavez 2002	75	58	47
■ Cesar Chavez 2003	147	99	61
■ Cesar Chavez 2004	133	118	60
■ Cesar Chavez 2005	58	39	27
■ Cesar Chavez 2006	34	26	19
■ Cesar Chavez 2007	59	38	28
■ Cesar Chavez 2008	40	22	17
■ Cesar Chavez 2009	63	36	21
■ Cesar Chavez 2010	42	24	19
■ Cesar Chavez 2011	60	39	24
■ Cesar Chavez 2012	58	52	25
■ Cesar Chavez 2013	150	62	61

**CESAR CHAVEZ ENGLISH PERCENTAGE 14 YEAR TREND
SANTA ANA COLLEGE OUTREACH
2000-2013**



	Eng n50	Eng n60	Eng 061	Eng 101
■ Cesar Chavez 2000 n = 43	63%	37%	0%	0%
■ Cesar Chavez 2001 n = 32	53%	22%	16%	9%
■ Cesar Chavez 2002 n = 54	35%	28%	31%	6%
■ Cesar Chavez 2003 n = 97	48%	29%	15%	7%
■ Cesar Chavez 2004 n =115	37%	38%	13%	11%
■ Cesar Chavez 2005 n = 39	31%	28%	31%	10%
■ Cesar Chavez 2006 n = 26	12%	38%	27%	23%
■ Cesar Chavez 2007 n= 36	22%	39%	25%	14%
■ Cesar Chavez 2008 n= 22	25%	46%	25%	4%
■ Cesar Chavez 2009 n=36	22%	42%	25%	11%
■ Cesar Chavez 2010 n=24	25%	46%	0%	29%
■ Cesar Chavez 2011 n=39	33%	36%	23%	8%
■ Cesar Chavez 2012 n=45	9%	58%	18%	16%
■ Cesar Chavez 2013 n=62	45%	35%	11%	8%