



**SANTA ANA COLLEGE
FACILITIES COMMITTEE MEETING
OCTOBER 18, 2016**





ACTIVE PROJECTS

Santa Ana College

- ▶ Central Plant, Infrastructure and Mechanical Upgrades

Santa Ana College

- ▶ Perimeter Site Improvements
- ▶ Building G Renovation
- ▶ Artesia Street Improvements
- ▶ Property Acquisition of 17th/Bristol St. Lot
- ▶ Dunlap Hall Renovation
- ▶ Temporary Village
- ▶ Parking Lot 11 & Site Improvements
- ▶ Tessmann Planetarium & Restroom Addition
- ▶ Temporary Village Phase 2



PROJECTS

- ▶ Dunlap Hall Renovation - Completed
- ▶ Central Plant & Infrastructure
- ▶ Johnson Student Center
- ▶ Johnson Demolition
- ▶ Science Center & Building J Demolition
- ▶ 17th & Bristol Street Parking Lot



PROJECT UPDATE SANTA ANA COLLEGE CENTRAL PLANT AND INFRASTRUCTURE

Project Summary:

- ▶ Construction of a new central plant building and replacement of all underground utilities (domestic water, sewer, fire water, storm drain, gas, electric and data).
- ▶ Central Plant facts:
 - ▶ Reduces electrical loads during peak demand periods.
 - ▶ Has a chilled water loop, connecting 7 existing buildings to the HVAC equipment to provide cooling.
 - ▶ Includes a new Energy Management System (EMS) to control building temperatures and monitor system remotely.
 - ▶ Building is designed to meet LEED Silver certification.

Budget:

- ▶ \$68.17 million





PROJECT UPDATE SANTA ANA COLLEGE CENTRAL PLANT AND INFRASTRUCTURE

Current Activities:

- ▶ Excavate chilled water lines
- ▶ Backfill trenches
- ▶ Install fire and domestic water lines
- ▶ Install block at elevator 1 and 2 (Central Plant)
- ▶ Concrete pour by Don Express



Upcoming Activities:

- ▶ Insulate, test and backfill chilled water lines
- ▶ Install power and signal lines
- ▶ Pour walkway north of Building N
- ▶ Install electrical conduits (Central Plant)

Current Status:

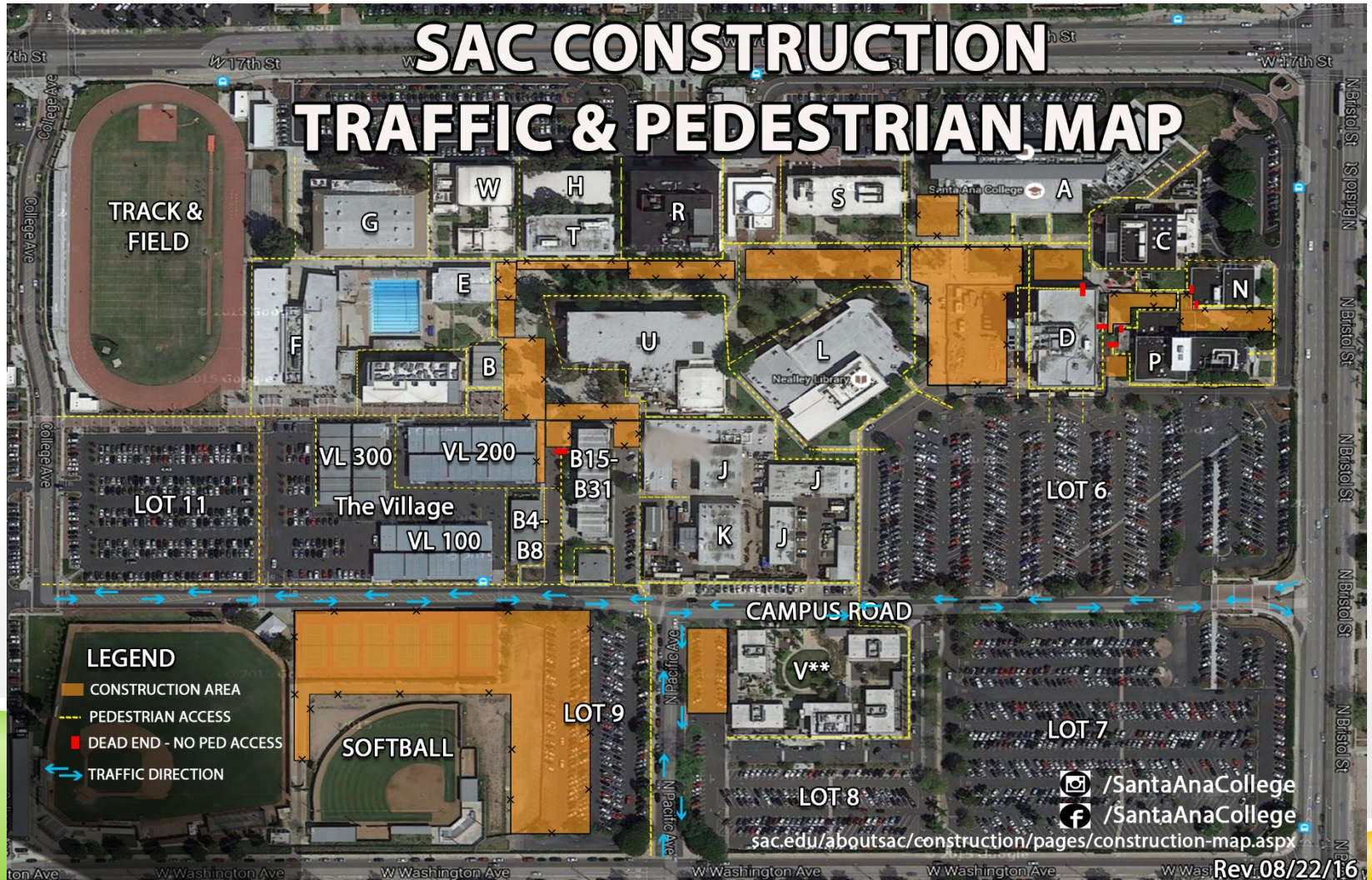
- ▶ The project is approximately 2 months behind the original target schedule.
- ▶ There have been numerous unforeseen conditions encountered.
- ▶ The project is 37% complete.

Target Occupancy/Completion

- ▶ December 2017 (under review)
- ▶ Project Close-Out 2018 (under review)



SANTA ANA COLLEGE CENTRAL PLANT AND INFRASTRUCTURE TRAFFIC & PEDESTRIAN MAP





PROJECT UPDATE SANTA ANA COLLEGE JOHNSON DEMOLITION

Project Summary:

- ▶ Demolition of existing Johnson Student Center.

Current Status:

- ▶ District will review options with the College prior to making a final recommendation.
- ▶ Decommissioning activities began in summer 2016.
- ▶ Target out-to-bid under review
- ▶ Target demolition start under review

Budget:

- ▶ \$2.5 million (increased budget due to costs associated with construction)





PROJECT UPDATE SANTA ANA COLLEGE JOHNSON STUDENT CENTER

Project Summary:

- ▶ Construction of a 59,638 square foot new Johnson Student Center.

Current Status:

- ▶ Schematic Design Phase has been completed and now in Design Development Phase. Review with College and user groups ongoing.
- ▶ Additional geotechnical borings have been completed to determine soil conditions.
- ▶ DSA approval anticipated May 2018.
- ▶ New Target construction start September 2018.
- ▶ New Target occupancy fall 2020.

Budget:

- ▶ \$40.7 million target

\$38.96 million funded by Measure Q

Note: Budget is currently deficient by \$1.74 million

Programs Include:

- ▶ Campus Store
- ▶ Grab-n-Go / Coffee & Juice
- ▶ DSPS
- ▶ EOPS/CARE & CalWORKS
- ▶ Student Financial Services
- ▶ SSSP / Upward Bound
- ▶ Warehouse
- ▶ Reprographics
- ▶ Conference Center
- ▶ Financial Aid
- ▶ Student Placement
- ▶ Health & Wellness Center
- ▶ DSPS
- ▶ Office of Student Life
- ▶ ASG
- ▶ The Spot





PROJECT UPDATE SANTA ANA COLLEGE SCIENCE CENTER

Project Summary:

- ▶ Construction of a new 65,428 square foot science center housing modern laboratories, classrooms, lecture classrooms, and faculty offices.
- ▶ Demolition of (3) J Buildings.

Current Status:

- ▶ 60% Construction Development package received by District. Ongoing review meetings with Campus user groups, M&O and IT.
- ▶ DSA submittal anticipated December 2016.
- ▶ DSA approval anticipated September 2017.
- ▶ Target construction start January 2018.
- ▶ Target occupancy summer 2020.

Budget:

- ▶ \$73.38 million



Programs Include:

- ▶ Division Office
- ▶ Faculty Offices
- ▶ (2) Standard Classrooms
- ▶ (1) Large Classroom
- ▶ (1) Large Divisible Classroom
- ▶ (1) Computer Lab
- ▶ (1) Engineering Lab & Support Space
- ▶ (6) Biology Labs & Support Space
- ▶ (2) Geology Labs & Support Space
- ▶ (5) Chemistry Labs & Support Space
- ▶ (1) Physics Labs & Support Space
- ▶ Student Collaboration Areas





PROJECT UPDATE SANTA ANA COLLEGE BUILDING J DEMOLITION (SCIENCE CENTER)

Project Summary:

- ▶ Relocation of Quick Copy Center into Temporary Village prior to demolition of (3) J Buildings.
- ▶ Relocation of maintenance storage items.
- ▶ Demolition of (3) J Buildings – part of the Science Project.

Current Status:

- ▶ New Relocation anticipated for summer 2017.
- ▶ District coordination meetings with user groups ongoing.
- ▶ New Target decommissioning activities fall 2017.

Budget:

- ▶ Included in Science Center Budget.



PROJECT UPDATE SANTA ANA COLLEGE PARKING LOT AT 17TH/BRISTOL ST.

Project Summary:

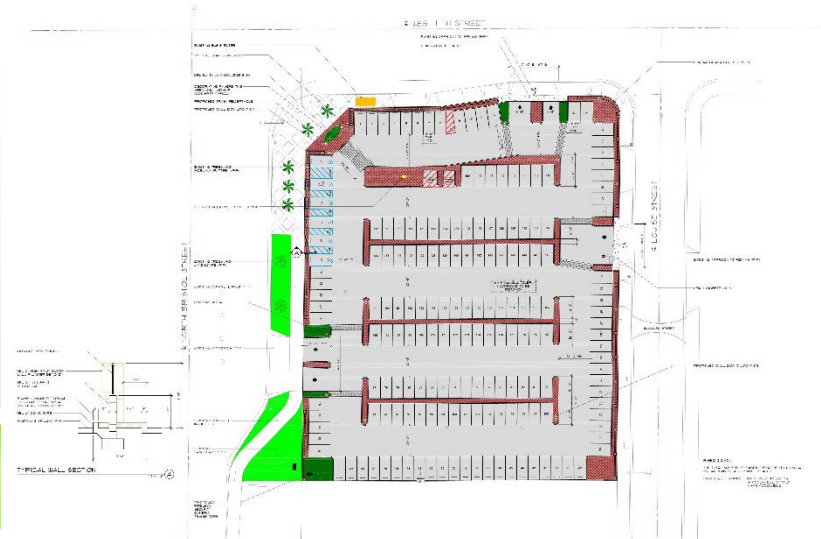
- ▶ New surface parking lot.

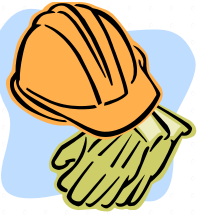
Current Status:

- ▶ Architect is revising plans to include walls, columns and fence as requested by the District and the Campus to address neighbor concerns.
- ▶ Plans submitted to City of Santa Ana Department of Public Works on March 8, 2016.
- ▶ Plans submitted to DSA on March 22, 2016. A re-submittal is required due to the revision of the plans.
- ▶ Target construction under review.

Budget:

- ▶ \$2.5 million
- ▶ Acquisition of property was paid by Measure E funds.





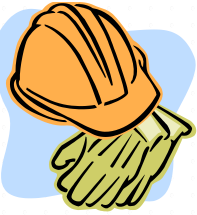
NEW 2016-2017 SCHEDULED MAINTENANCE PROJECTS

Santa Ana College *

State Allocation 2017 \$440,000

- ▶ Lighting Contact/Relays (D, H, L, R, T)
- ▶ Air Compressors (C, K, T)
- ▶ Window Replacement (H)
- ▶ Door Hardware Upgrade

* All projects are in the planning phase



2015-2016 SCHEDULED MAINTENANCE NEW PROJECTS

Santa Ana College

State Allocation 2016 \$1,837,665

- ▶ Roof Replacement (W)
- ▶ Roof Replacement (E, G, K & S)
- ▶ Water Conservation
- ▶ Door Replacement (C, H, L, R, S and OCSRTA)
- ▶ Flooring Repair (Gym)
- ▶ Flooring Repair (Dance)
- ▶ Painting (C, P, S)
- ▶ Waste Oil Tank Removal & Replacement (K)
- ▶ Carpet Replacement (B, L, S) - carryover from SM 2015 - \$149,650.



2015-2016 SCHEDULED MAINTENANCE PROJECTS SANTA ANA COLLEGE

PROJECT	STATUS	ESTIMATED BUDGET
Roof Replacement (W)	Notice of completion approved by Board of Trustees on August 15, 2016. Project to be closed out.	\$357,235
Roof Replacement (E, G, K, S)	Contractor commenced with Building S on September 19, 2016. Building E will start on October 3, 2016, and Building G will start on October 10, 2016.	\$1,059,100
Waste Oil Tank Replacement	Environmental consultant, Salem Engineering, has been hired to develop scope and bid documents. Bid documents to be developed for release November 2016.	\$62,540
Water Conservation	Bid documents are being prepared.	\$80,000
Door Replacement (C, H, L, R, S, OCSRTA)	Anticipated Board approval of contractor on October 24, 2016.	\$100,530
Flooring Repair (G)	Phase 1- Gym floor repair was completed on August 4, 2016. Phase 2- Resurface and restripe, schedule TBD.	\$100,005
Dance Room Floor Repair (G)	District has hired Performing Arts Architect to develop scope due to specialized nature of a dance floor.	Included in Flooring Repair Budget
Painting (C, P, S)	Schedule under review. Budget under review. Central Plant coordination of construction activities.	\$78,255 * Budget under review
Carpet Replacement (B, L, S)	Installation in Building B has been completed. Installation in Building S has been scheduled for December 2016. Building L is pending as per Campus and installer.	SM 2015 carryover
TOTAL		\$1,837,665

CURRENT CAPITAL PROJECTS SANTA ANA COLLEGE

PROJECT	STATUS	ESTIMATED BUDGET
Storm Water Management Improvements (Orange County Sheriff's Regional Training Academy)	Contractor was approved by Board of Trustees on October 10, 2016. Construction anticipated for end of October 2016.	\$153,500
Emergency Blue Phone and Path of Travel (Santa Ana College, Digital Media Center, Centennial Education Center, Orange County Sheriff's Regional Training Academy)	Schematic design cost estimate was received and is under review by the District. Campus walks were conducted to locate power and data availability.	\$828,300
Chavez Hall Renovation (moved from Measure E Funds)	Currently developing scope of work to remediate/renovate the building. Scope could be completed in phases.	\$230,000

CURRENT REQUESTED PROJECTS SANTA ANA COLLEGE

PROJECT	STATUS	ESTIMATED BUDGET
Football Field Fence & Gate	This project requires DSA approval. The District's on-call Architect will commence design.	\$14,000 (Redevelopment Fund)
Hammond Hall Clean Room	DSA re-submittal scheduled for October 25, 2016. The resubmittal addresses the revisions which include the new cleanroom support details (requested by DSA after the first submittal).	\$113,500 (SAC Grant Funds)
Block Wall (Orange County Sheriff's Regional Training Academy)	Bids were released September 21, 2016 with a due date of October 24, 2016. Anticipated start of construction in December 2016.	\$420,000 (Redevelopment Fund)
All Call Fire Alarm	The College has requested to add a building to building call feature "all-call" from the fire alarm panels in each building. Quotes have been requested for this programmatic change.	\$125,000



QUESTIONS

