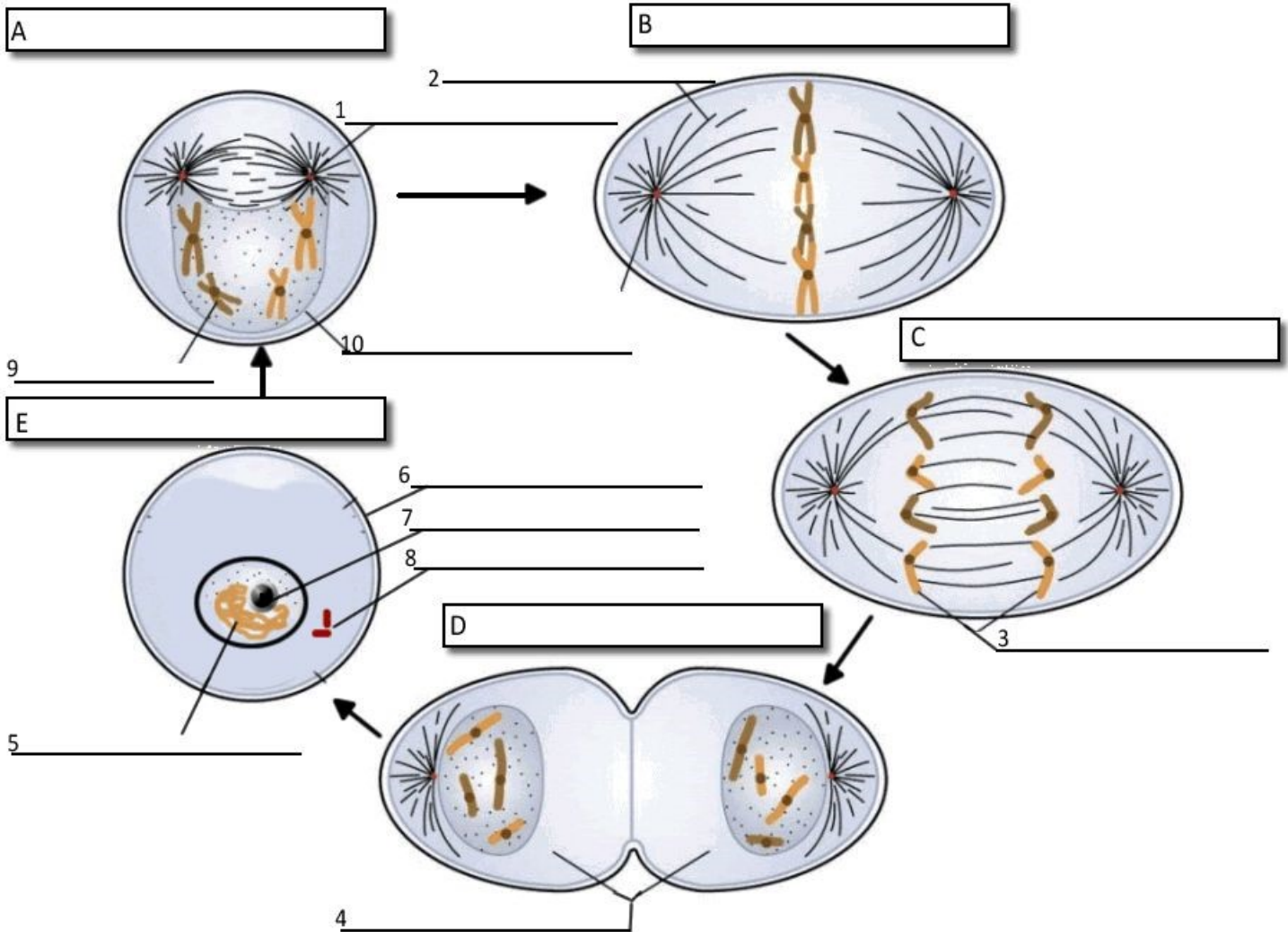


# THE CELL CYCLE



11. What moves the chromatids during mitosis? \_\_\_\_\_
12. What anchors the spindle? \_\_\_\_\_
13. What are the four phases of mitosis? \_\_\_\_\_
14. How many daughter cells are created from mitosis and cytokinesis? \_\_\_\_\_
15. During what phase does cytokinesis begin? \_\_\_\_\_
16. If a human cell has 46 chromosomes, how many chromosomes will be in each daughter cell? \_\_\_\_\_
17. The nuclear membrane dissolves during what phase? \_\_\_\_\_
18. What structure holds the individual chromatids together? \_\_\_\_\_