

## Planetarium Upgrade & Restroom Addition

**Architect:** W+W Architects

**Construction Manager:** Linik Corp.

**Contractor:** McCarthy Building Companies, Inc.

**Contract Start:** 3/3/14

**Contract Completion:** 9/30/14

**Scope:** One of three projects within the Campus Improvements Package 4 Project. This project includes renovating the existing Tessmann Planetarium, enhancing the building exterior and constructing a new restroom annex.

### Construction Alerts:

- Shoring is scheduled to begin within the construction area, and an increase in noise and vibration activities will occur in the ball field area and Parking Lot #9. *Issued on 4/14/14 to SAC Campus.*
- Partial closure of north-bound lane on College Ave. to tie-in to existing storm drain line. Flagmen will be present to direct 2-way traffic along the south-bound lane. *Issued on 4/16/14 to SAC Campus.*

**Status:** Recent construction activities are listed below:

- Trees and shrubs demolition
- Interior demolition
- Exterior site concrete demolition
- Survey & rough grading operations
- Roofing system demolition

### Upcoming and Current Activities:

- Site concrete demolition
- Rough grading
- Underground utilities



*Hardscape Removal and Rough Grading Operations*



*Hardscape Removal and Rough Grading Operations*

## **Parking Lot #11 Expansion, Road Improvements, Retention Basin**

**Architect:** W+W Architects

**Construction Manager:** Linik Corp.

**Contractor:** McCarthy Building Companies, Inc.

**Contract Start:** 3/3/14

**Contract Completion:** 9/30/14

**Scope:** One of three projects within the Campus Improvements Package 4 Project. This project includes replacing the old soccer field with a new parking lot that will include a new accessible ADA parking and an electric car charging station. Enhancement of storm drainage system to provide a retention system that will divert storm runoff back into the natural aquifer.

### *Construction Alerts:*

- Shoring is scheduled to begin within the construction area, and an increase in noise and vibration activities will occur in the ball field area and Parking Lot #9. *Issued on 4/14/14 to SAC Campus.*
- Partial closure of north-bound lane on College Ave. to tie-in to existing storm drain line. Flagmen will be present to direct 2-way traffic along the south-bound lane. *Issued on 4/16/14 to SAC Campus.*

**Status:** Recent construction activities are listed below:

- Remove existing AC paving and base material
- Survey & Rough grading operations
- Re-route existing utilities at Retention Basin
- Establish SWPPP BMP's

### **Upcoming and Current Activities:**

- Rough Grading operations
- Install shoring beams at the Retention Basin
- Underground utilities at Parking Lot #11

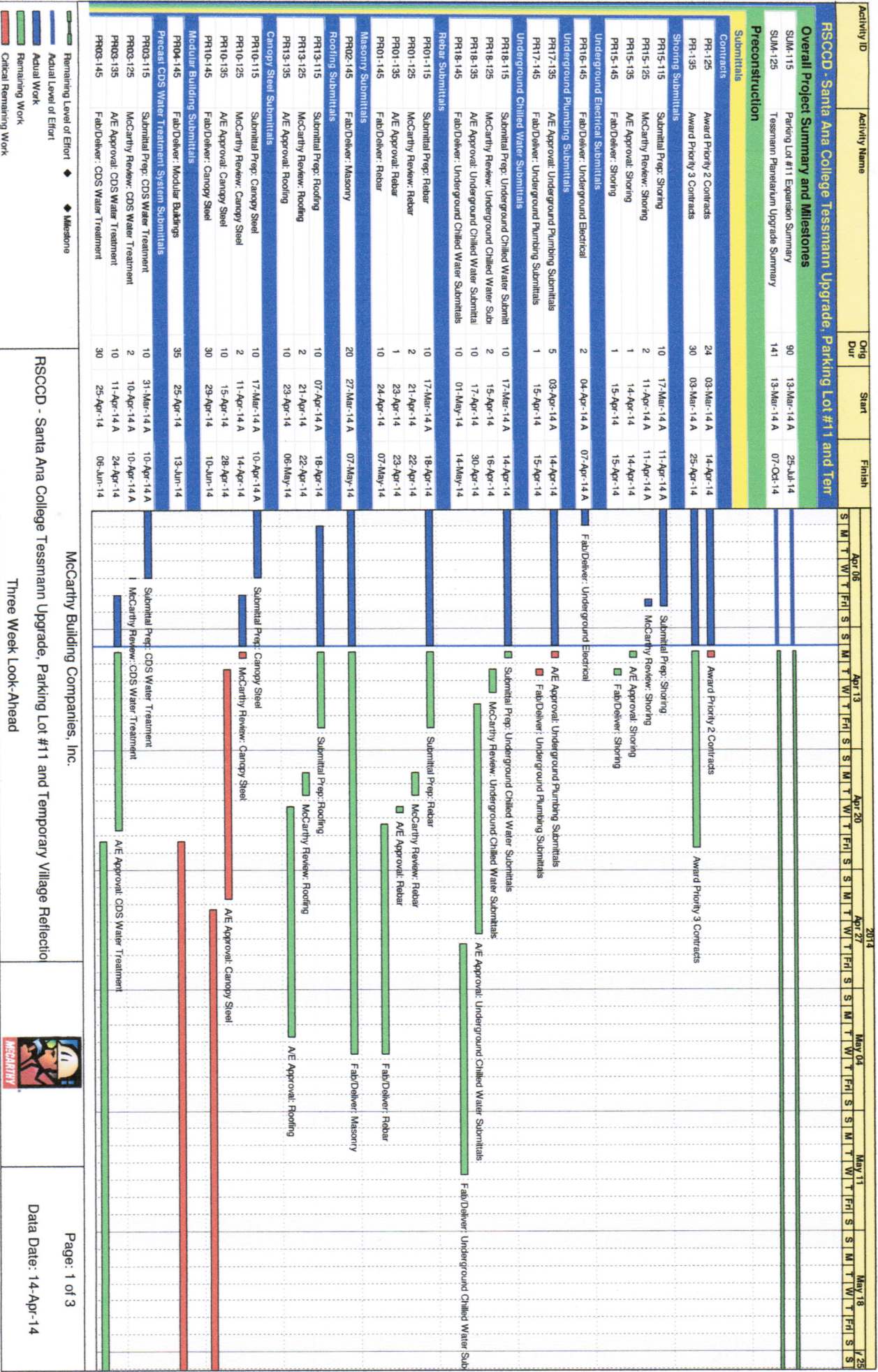


*Drilling rig performing shoring operations between ball fields and tennis courts.*

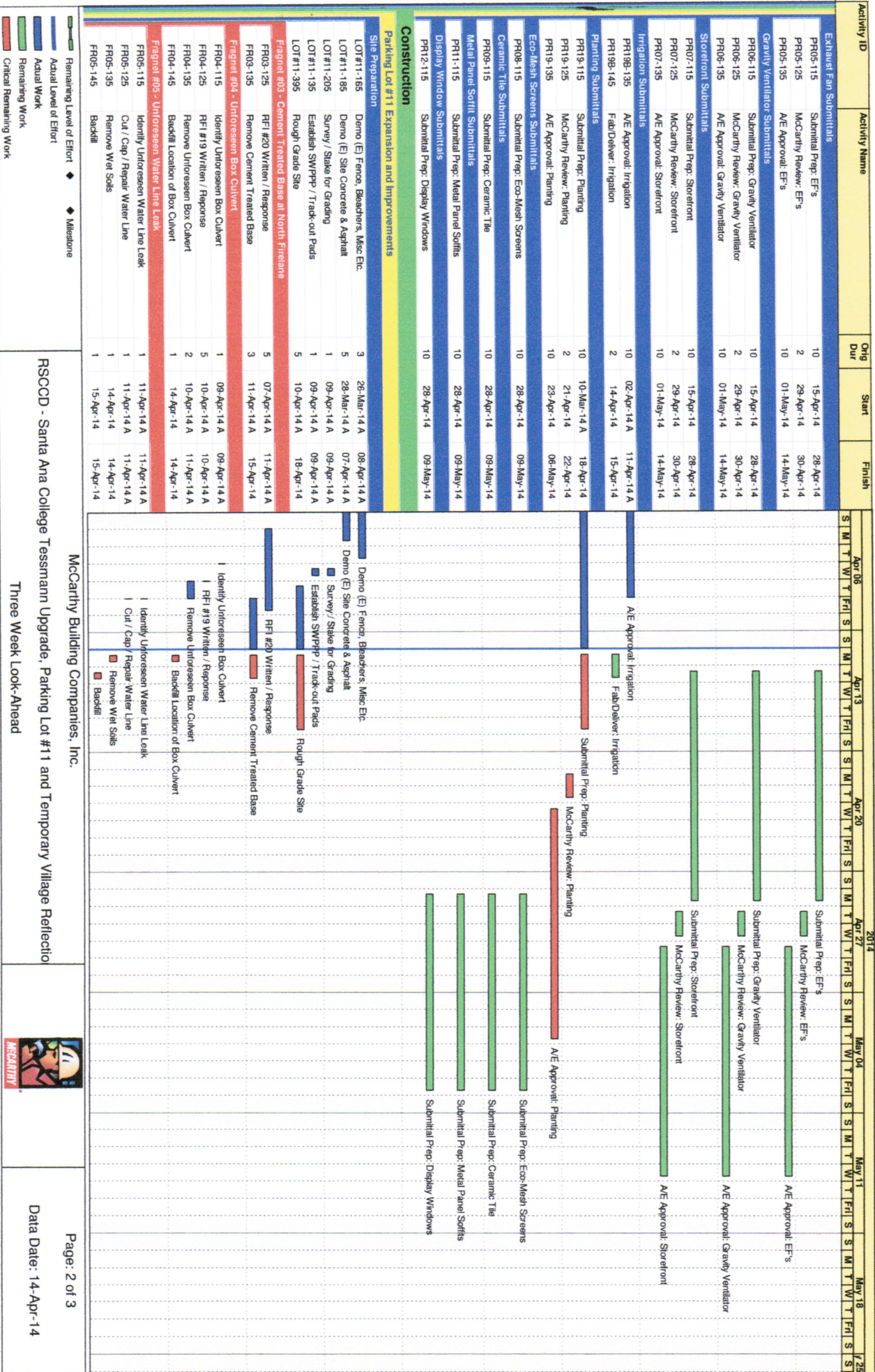


*Grading and underground utility operations at Parking Lot #11.*















# SITE LOGISTICS PLAN

MONDAY 4-14-14

